



BSCZOP132: ANIMAL DIVERSITY- I

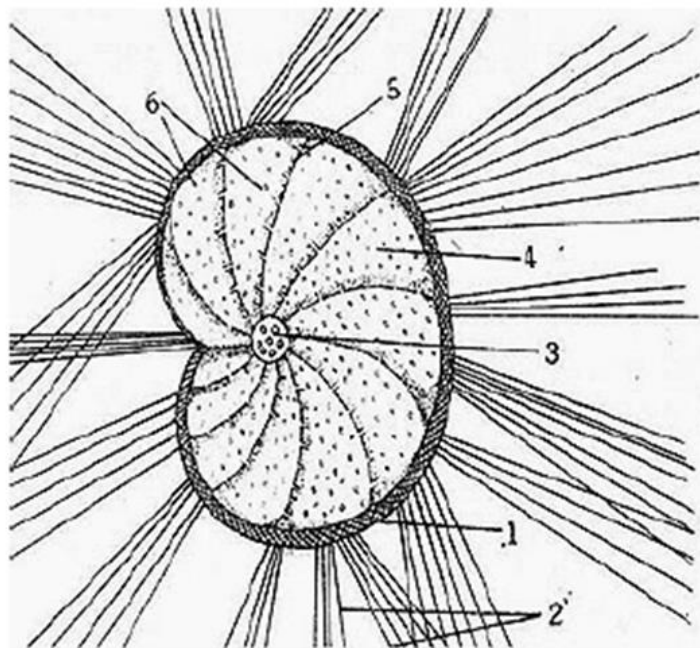
DR K SANTHOSH KUMAR M.Sc., B.Ed., Ph.D.
DEPARTMENT OF ZOOLOGY
POORNAPRAJNA COLLEGE, UDUPI

A. Museum specimens and slides

Phylum : Protozoa

Class : Rhizopoda

Order : Foraminifera.



1. Shell
2. Reticulopodia
3. Proloculum
4. Chamber
5. Retral Processes
6. Pores

ELPHIDIUM

Phylum: Euglenozoa

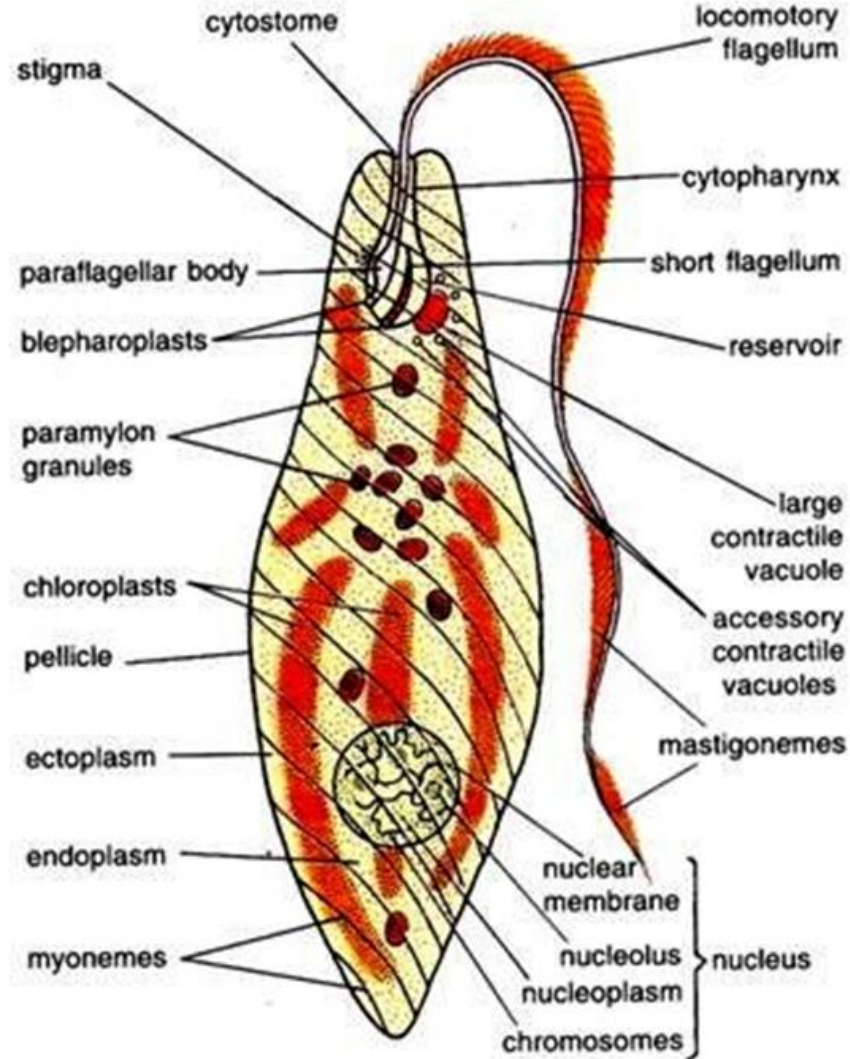
Class: Euglenoida

Order: Euglenales

Family: Euglenaceae

Genus: *Euglena*

Species: *viridis*



Phylum: Ciliophora

Class: Oligohymenophorea

Order: Peniculida

Family: Parameciidae

Genus: *Paramecium*

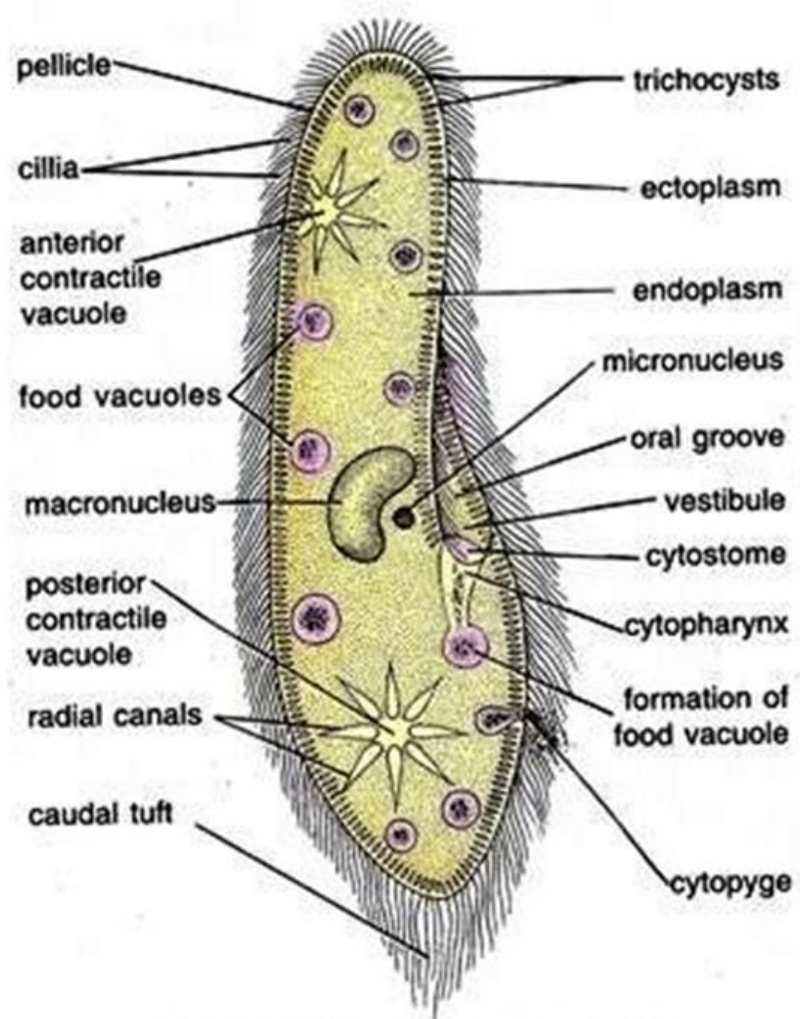
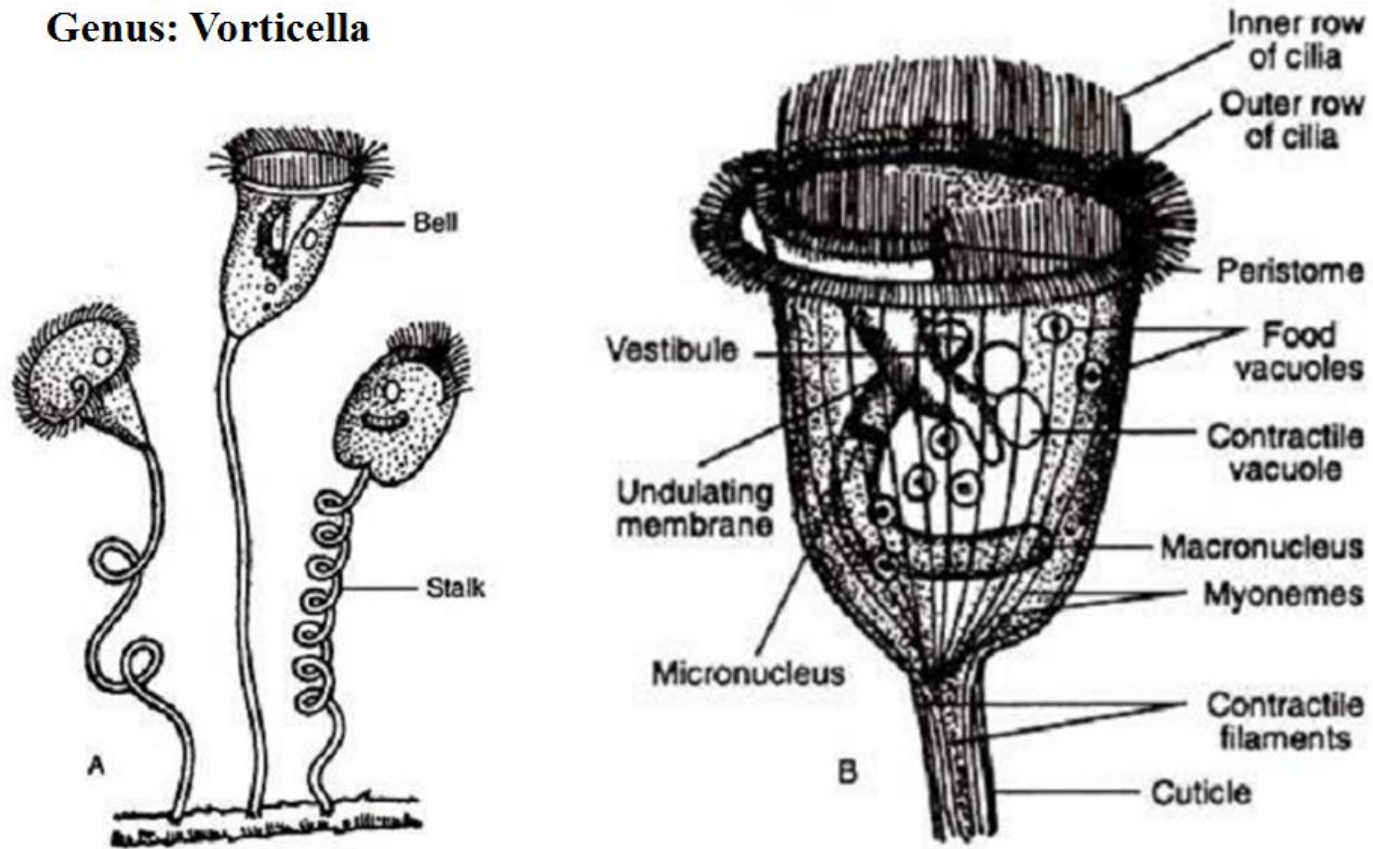


Fig. 20.1. *Paramecium caudatum*.

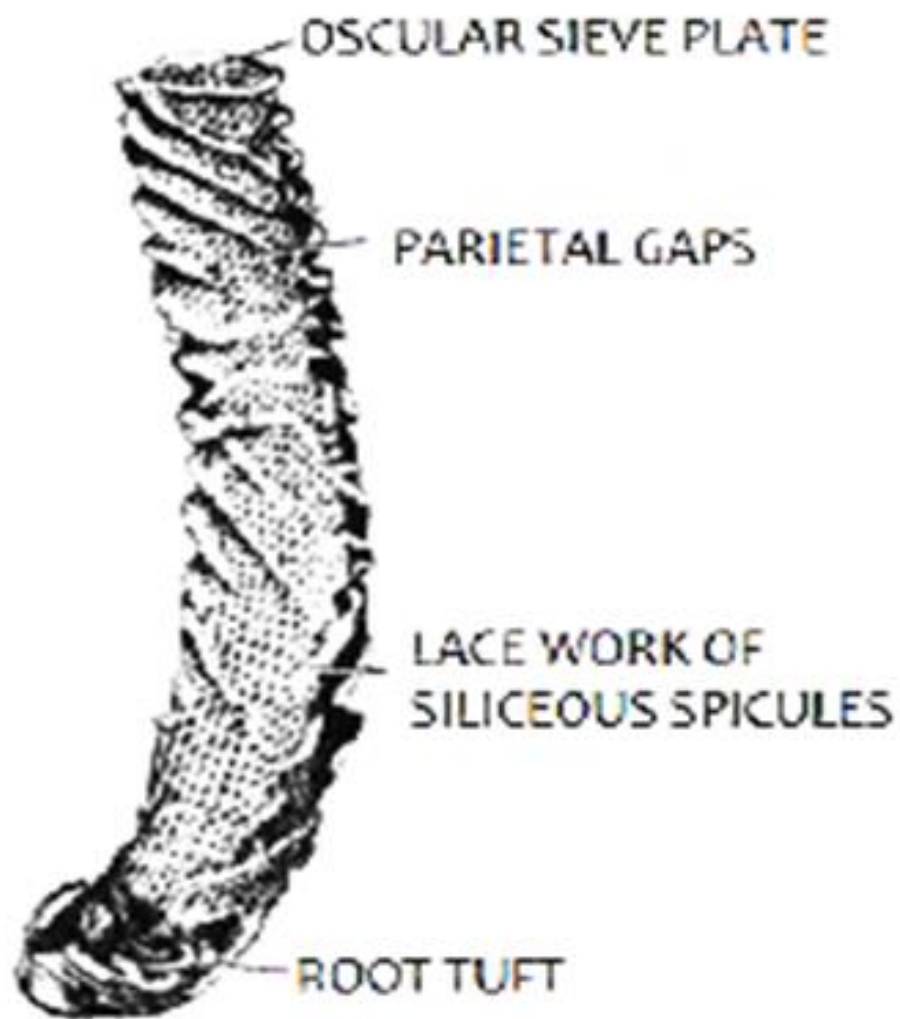
Phylum: Ciliophora
Class: Oligohymenophorea
Order: Sessilida
Family: Vorticellidae
Genus: Vorticella



PHYLUM: PORIFERA

CLASS: HEXACTINELLIDA

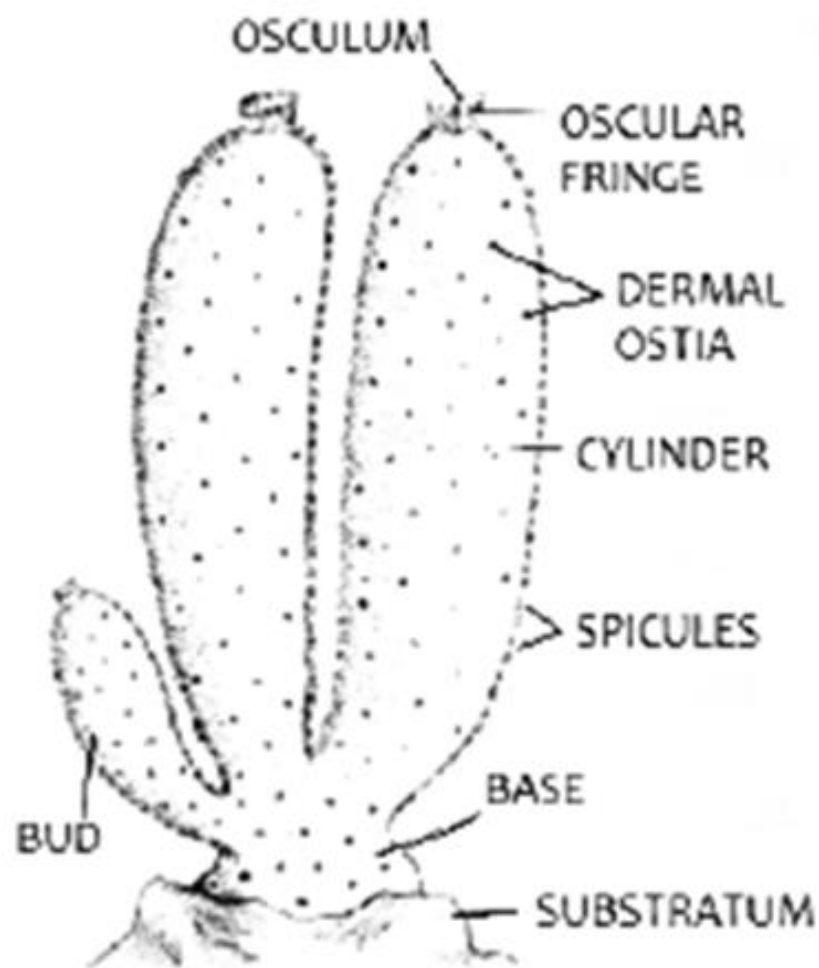
EXAMPLE: *EUPLECTELLA*



PHYLUM: PORIFERA

CLASS: CALCAREA

EXAMPLE: SYCON

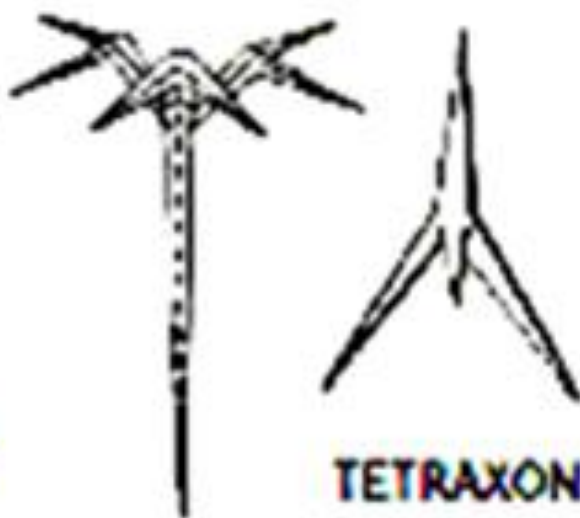


PHYLUM: PORIFERA

EXAMPLE: SPICULES OF SPONGES



MONAXON SPICULES



TETRAXON SPICULES



AMPHIDISC



TRIAXON
SPICULE

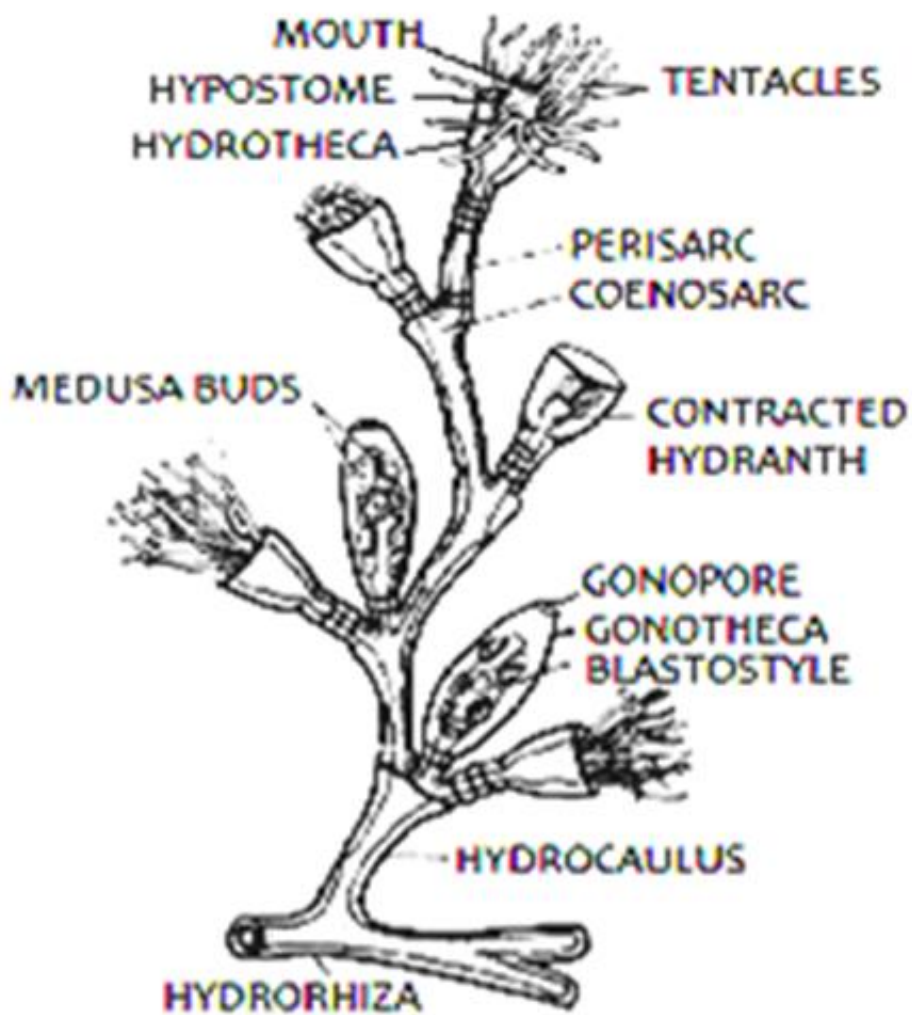


POLYAXON
SPICULES

PHYLUM: COELENTERATA

CLASS: HYDROZOA

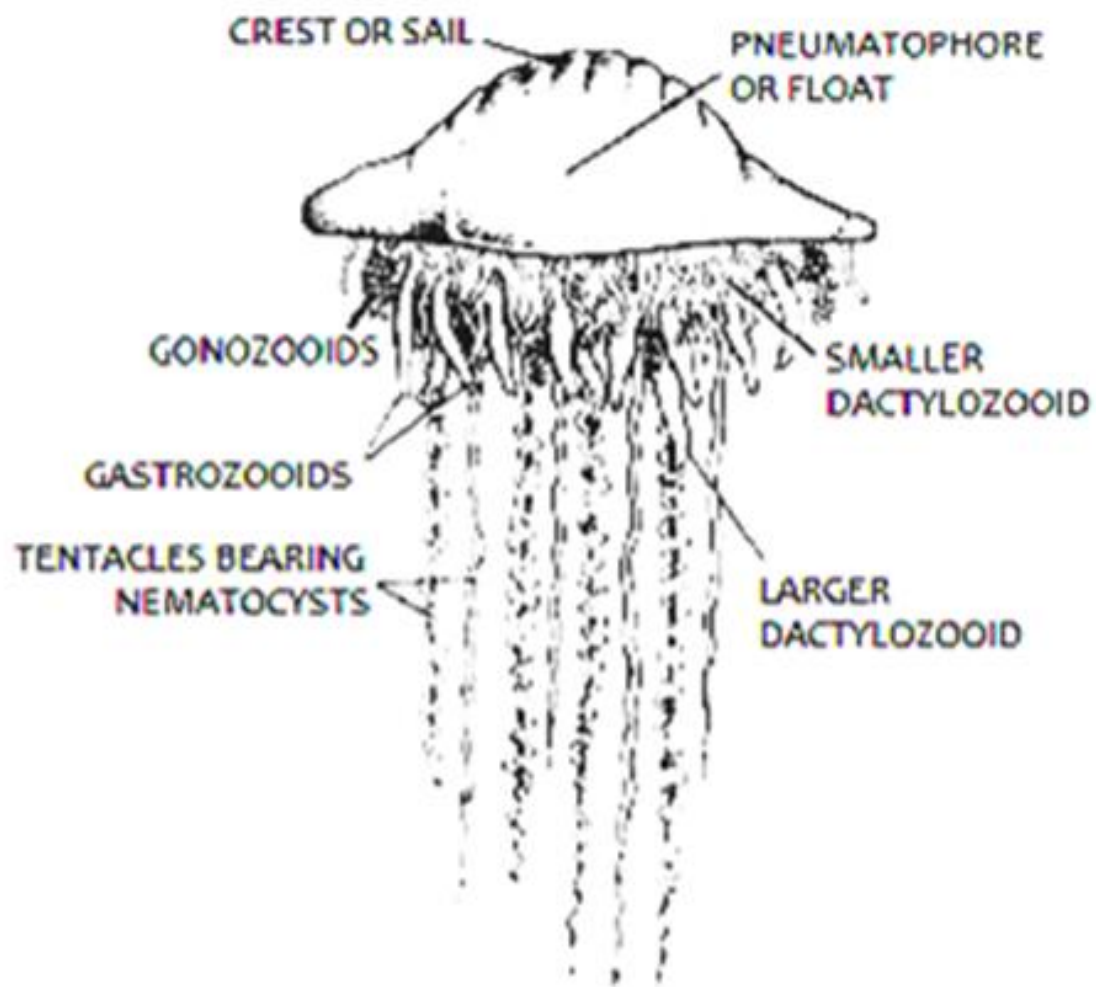
EXAMPLE: *OBELIA*

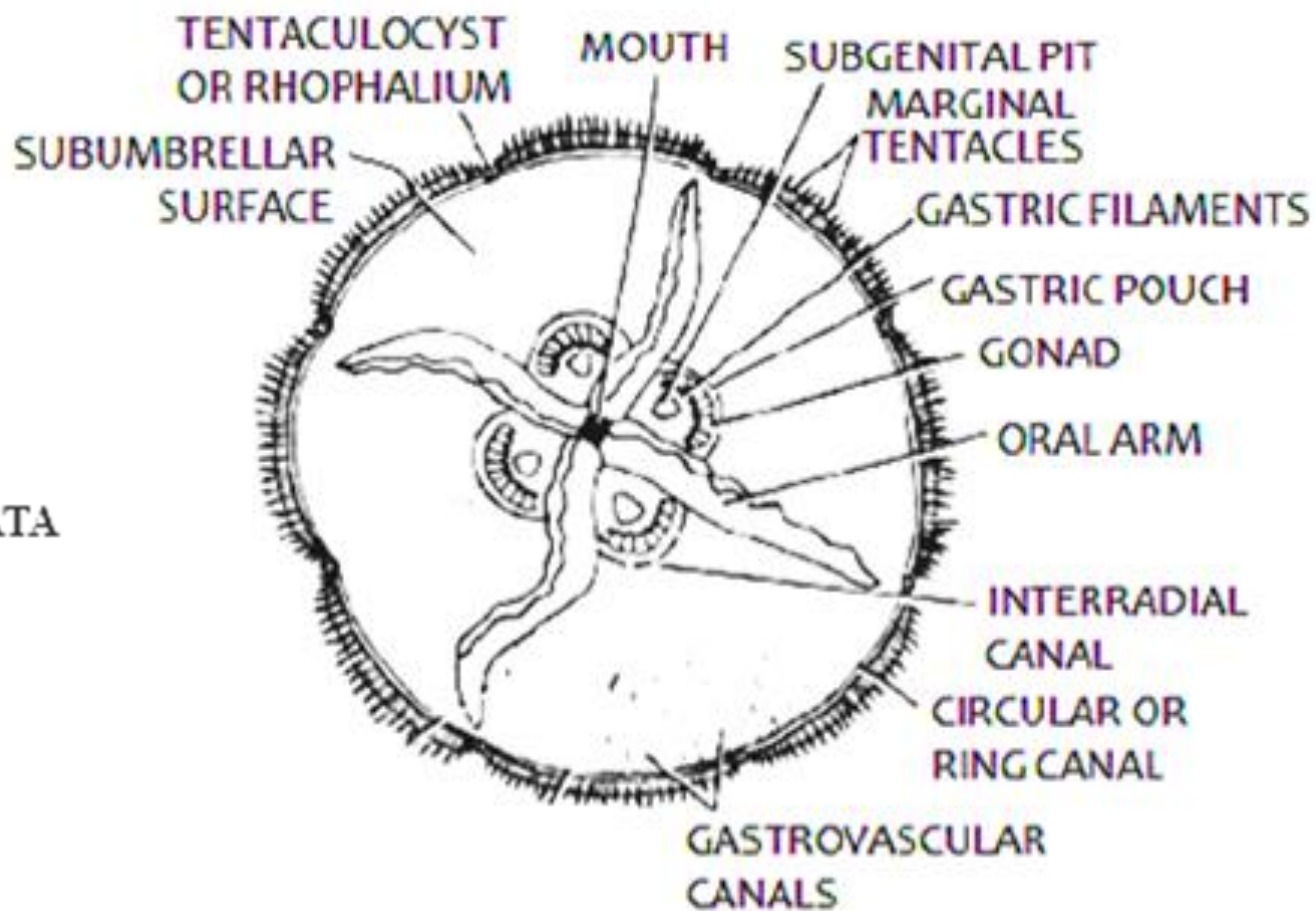


PHYLUM: COELENTERATA

CLASS: HYDROZOA

EXAMPLE: *PHYSALIA*





PHYLUM: COELENTERATA

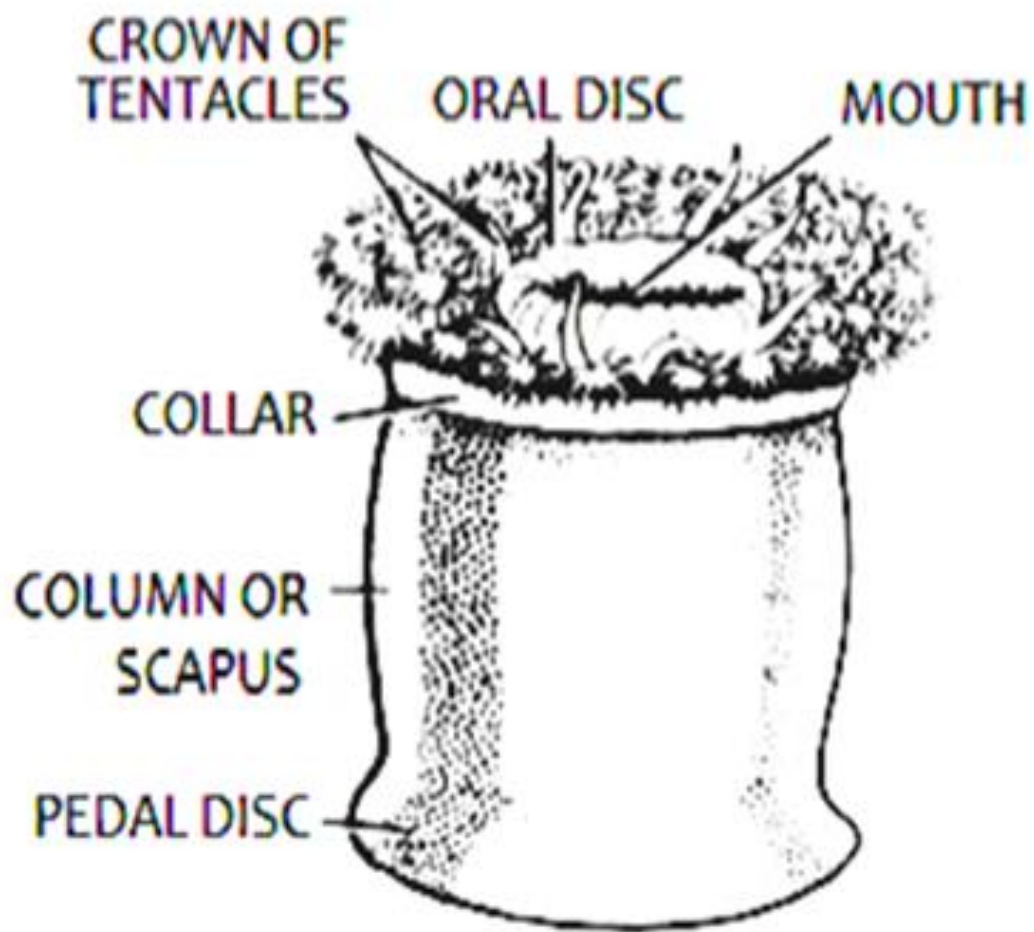
CLASS: SCYPHOZOA

EXAMPLE: *AURELLA*

PHYLUM: COELENTERATA

CLASS: ANTHOZOA

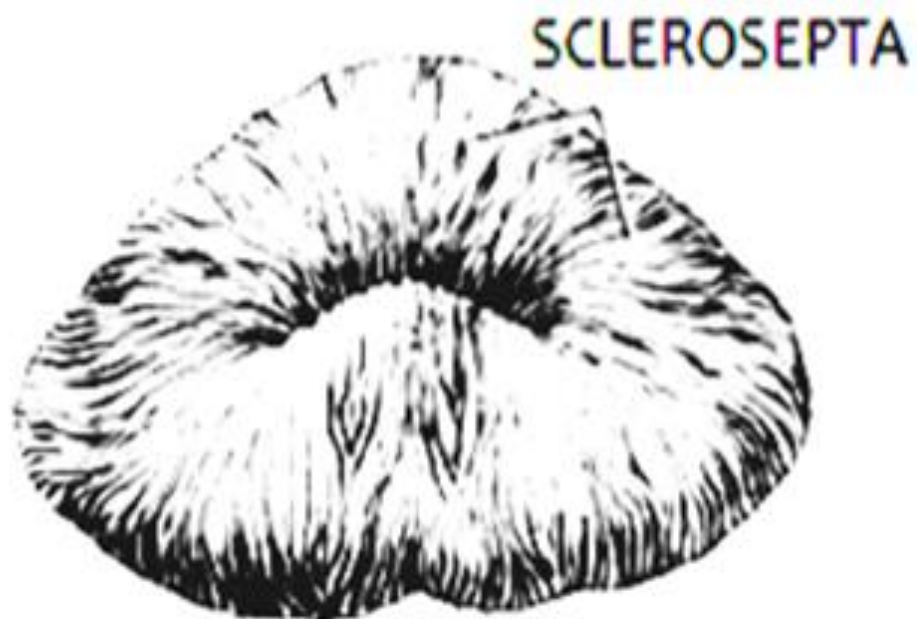
EXAMPLE: SEA ANEMONE



PHYLUM: COELENTERATA

CLASS: ANTHOZOA

EXAMPLE: *FUNGIA*



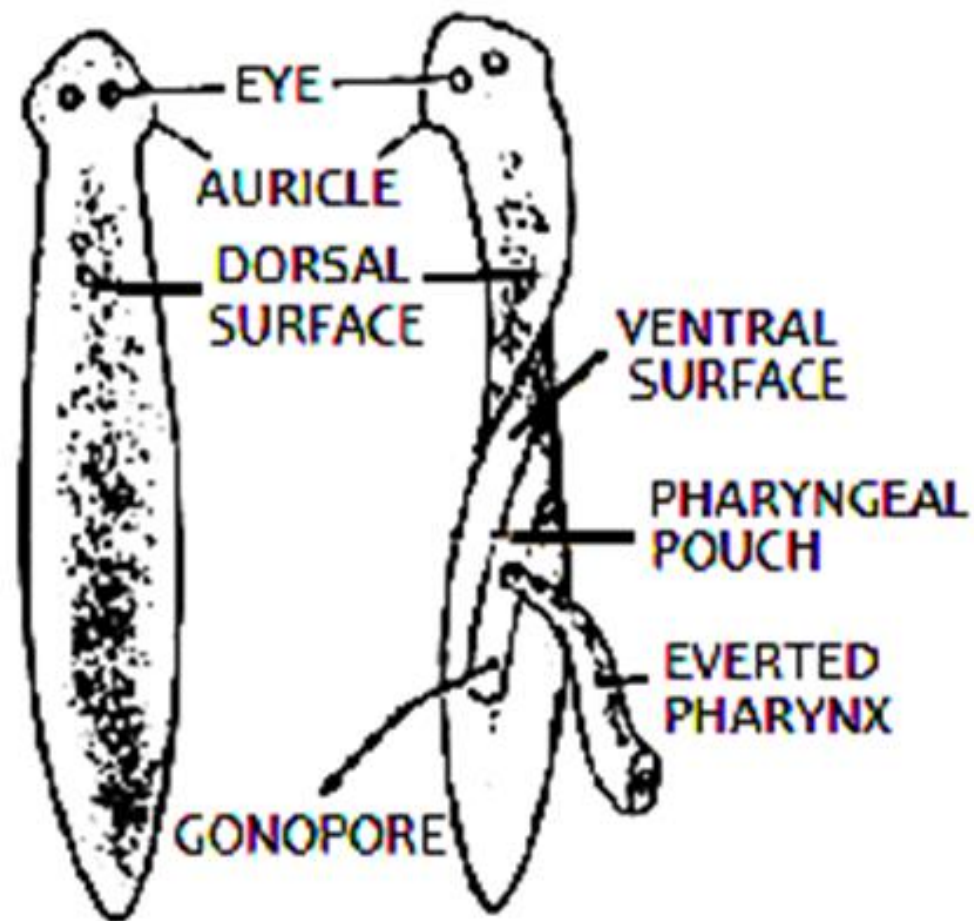
FUNGIA

Helminthes

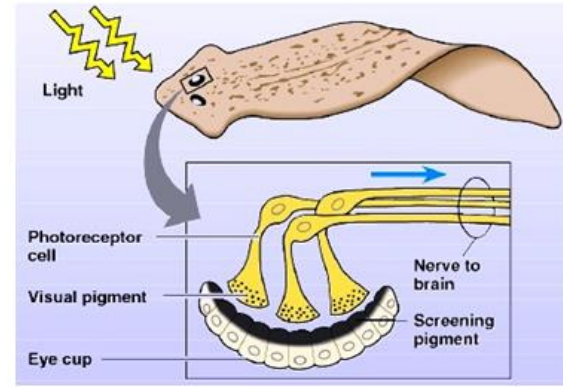
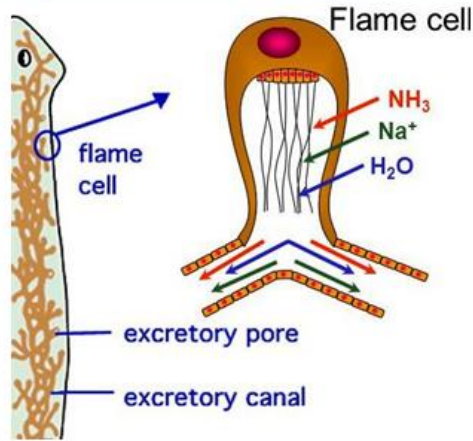
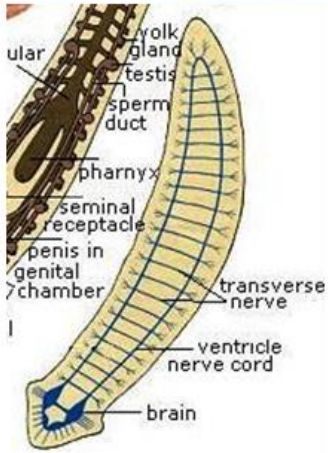
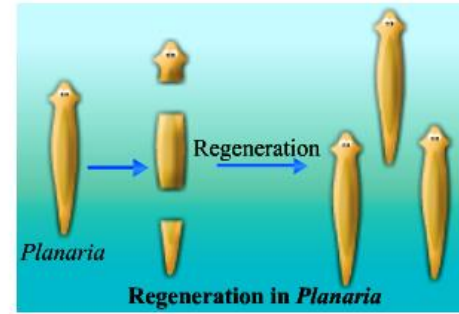
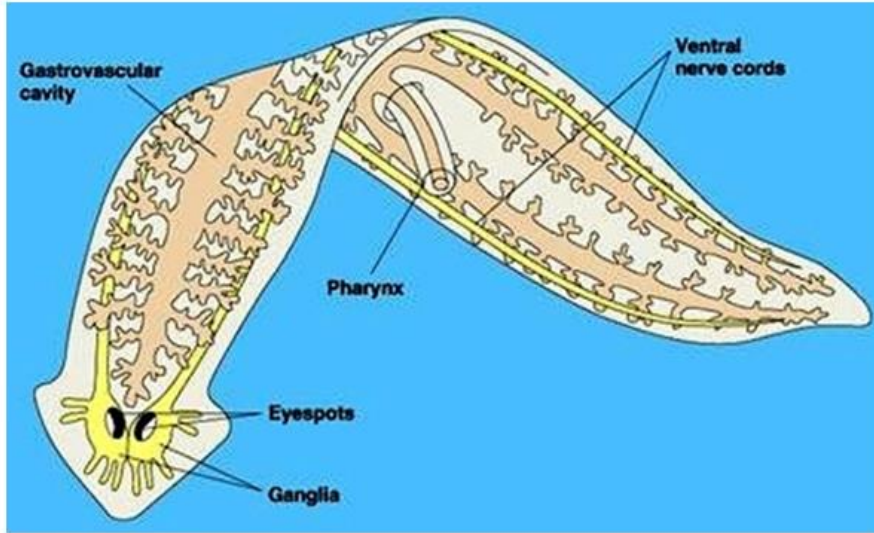
PHYLUM: PLATYHELMINTHES

CLASS: TURBELLARIA

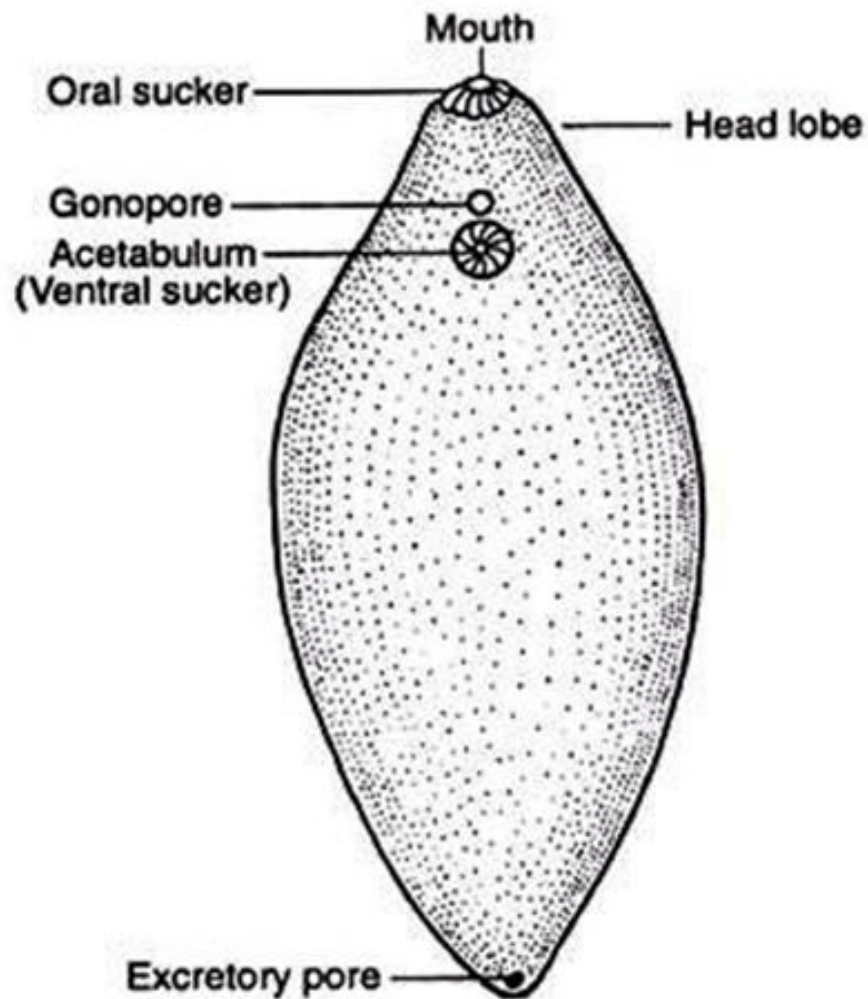
EXAMPLE: *PLANARIA*



Dugesia (Planaria)



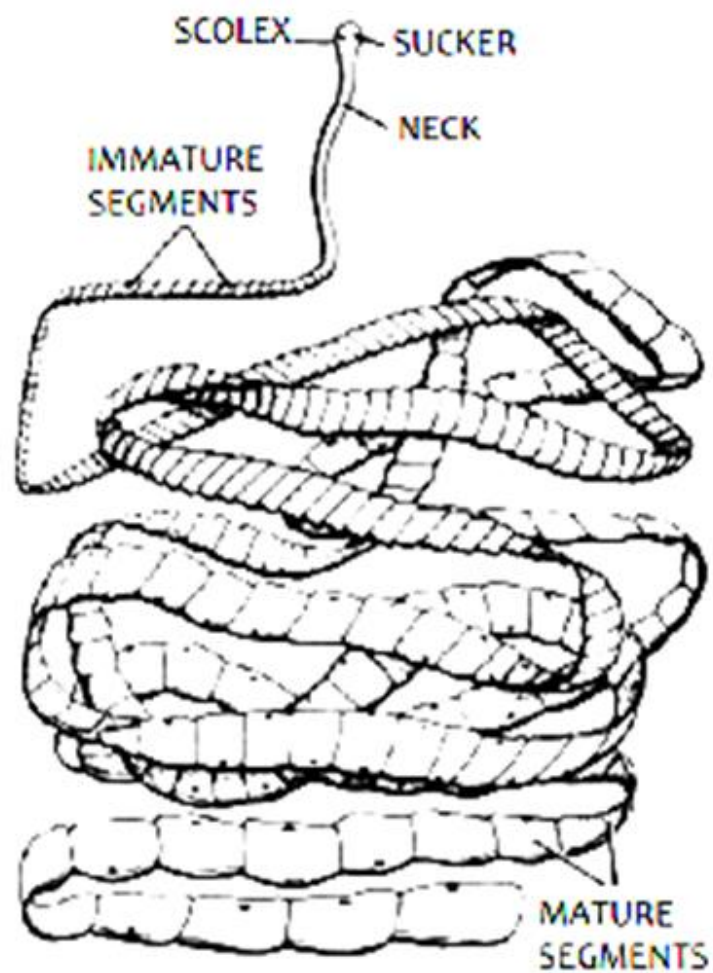
PHYLUM: PLATYHELMINTHES
CLASS: TREMATODA
EXAMPLE: *FASCIOLA HEPATICA*

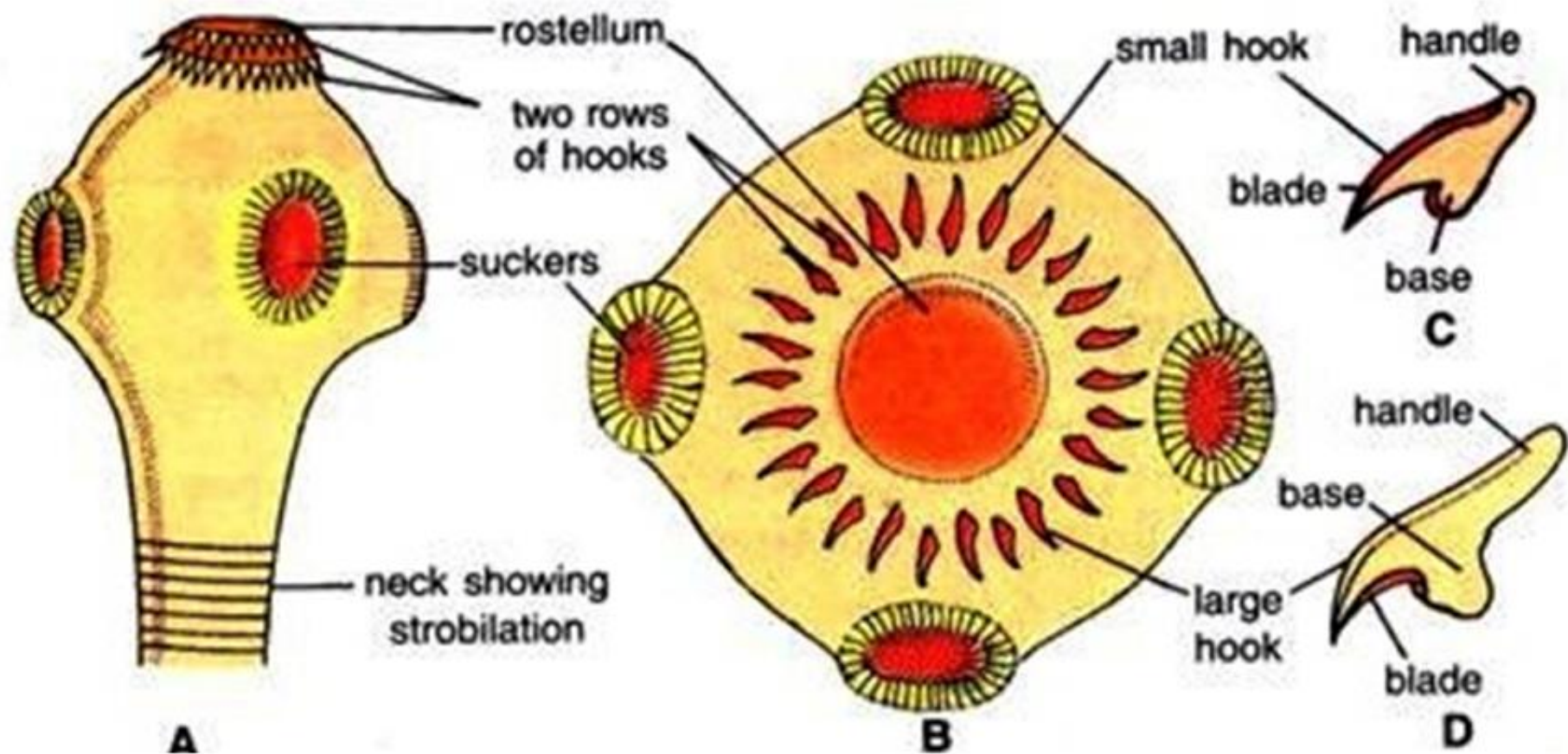


PHYLUM: PLATYHELMINTHES

CLASS: CESTODA

EXAMPLE: *TAENIA SOLIUM*

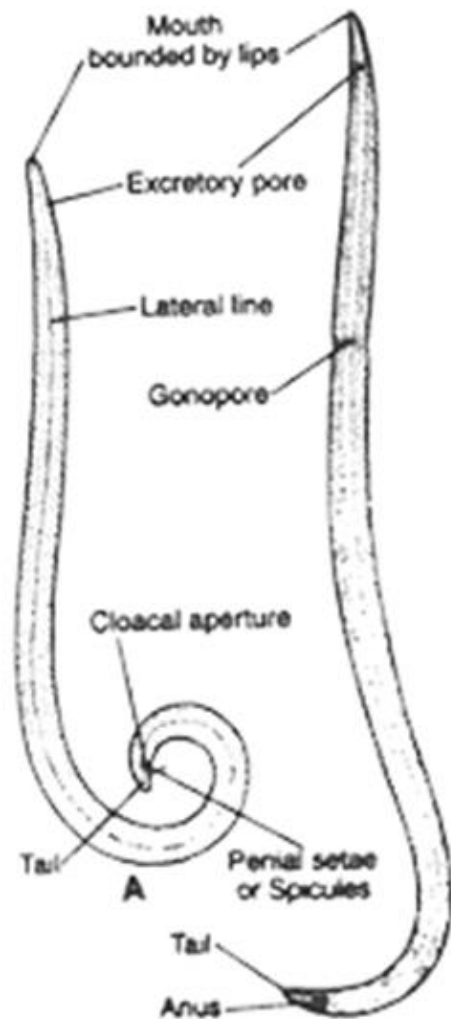




PHYLUM: NEMATHELMINTHES

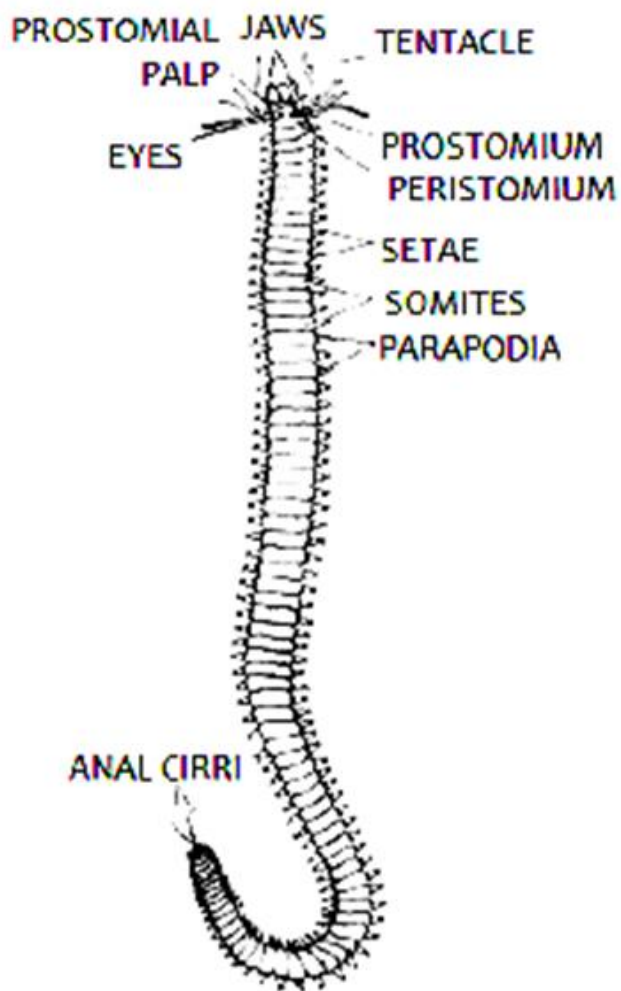
CLASS: PHASMIDA

EXAMPLE: ASCARIS LUMBRICOIDES



ANNELIDA

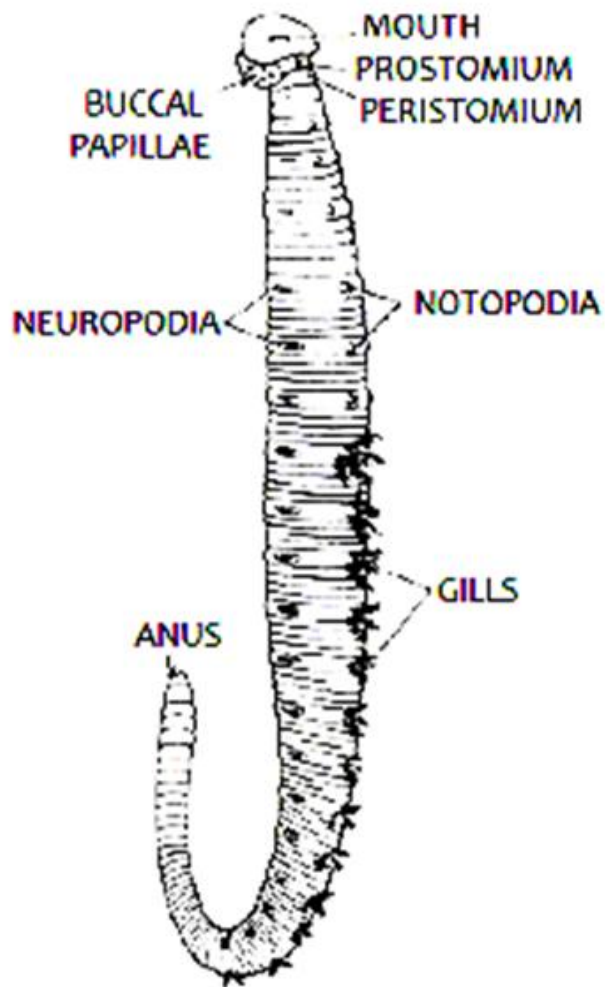
PHYLUM: ANNELIDA
CLASS: POLYCHAETA
EXAMPLE: NERIES



PHYLUM: ANNELIDA

CLASS: POLYCHAETA

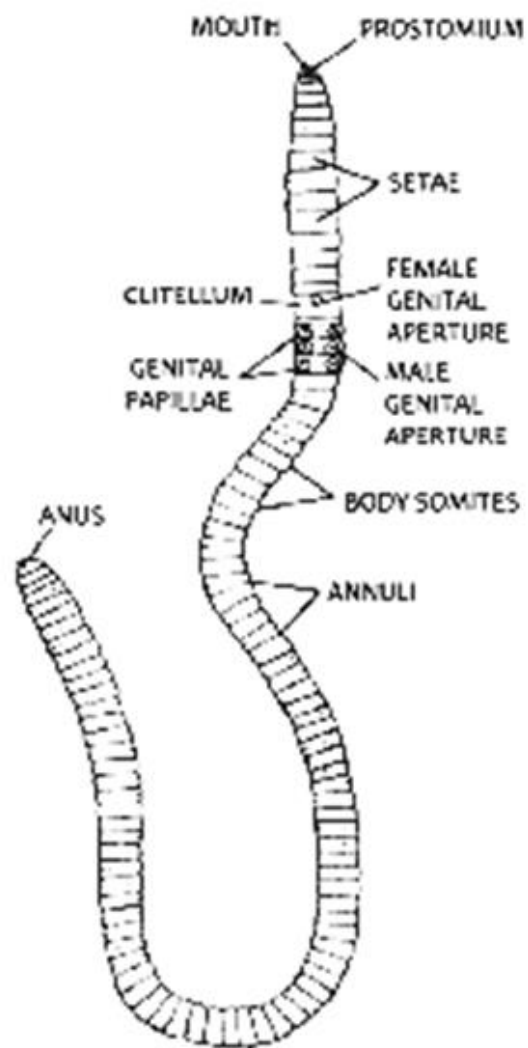
EXAMPLE: *ARENICOLA*



PHYLUM: ANNELIDA
CLASS: POLYCHAETA
EXAMPLE: CHAETOPTERUS

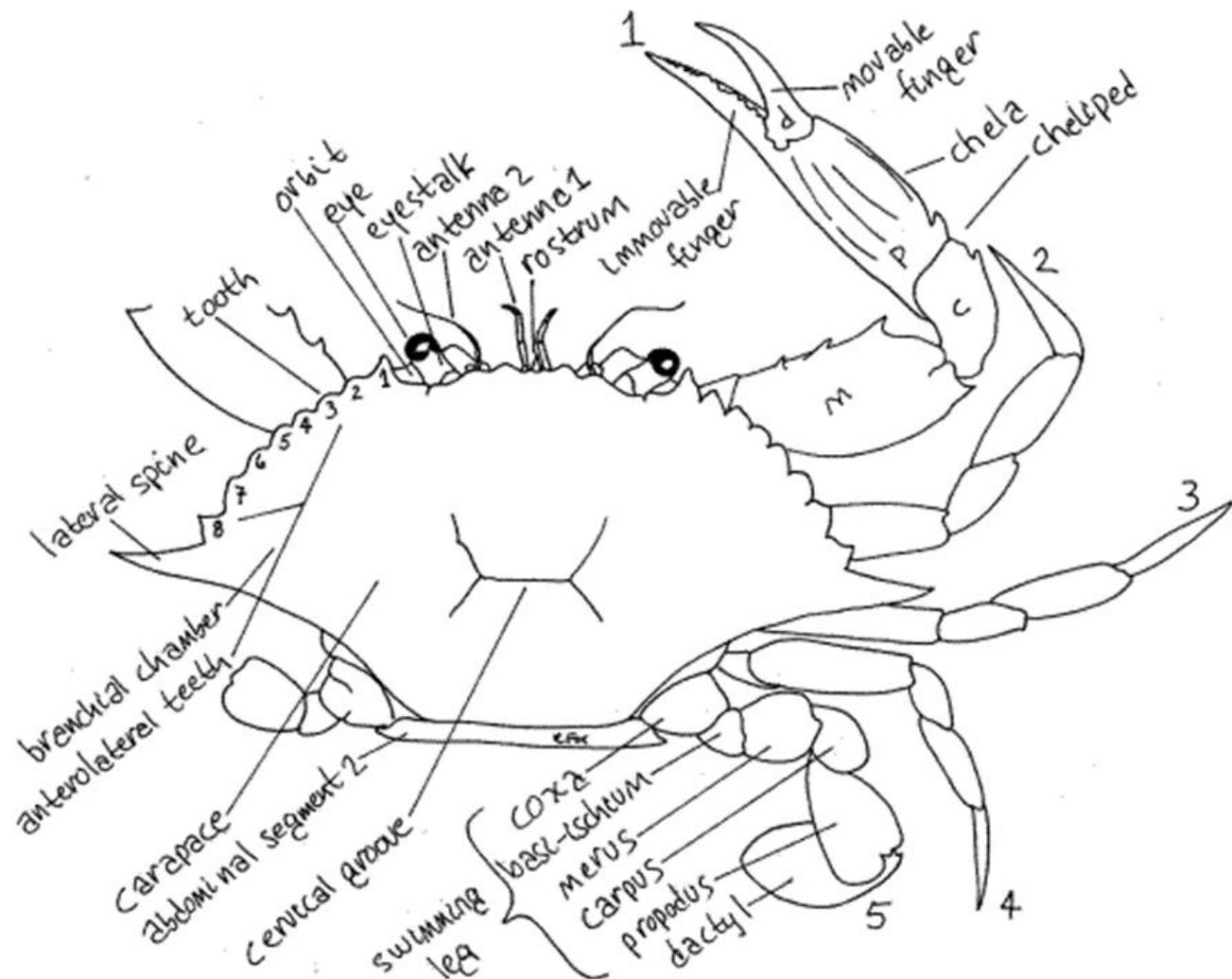


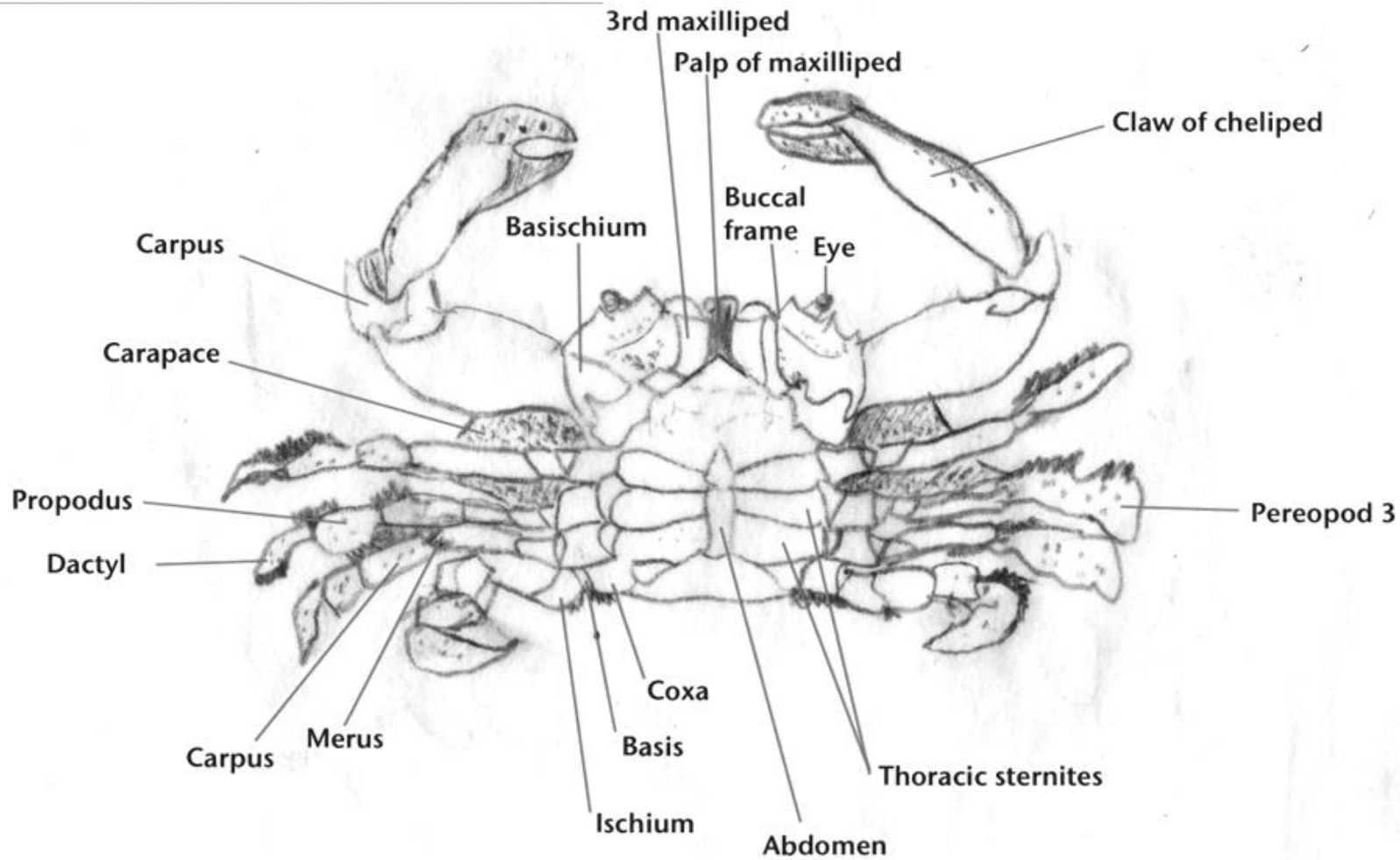
PHYLUM: ANNELIDA
CLASS: OLIGOCHAETA
EXAMPLE: *PHERETIMA*



ARTHROPODA

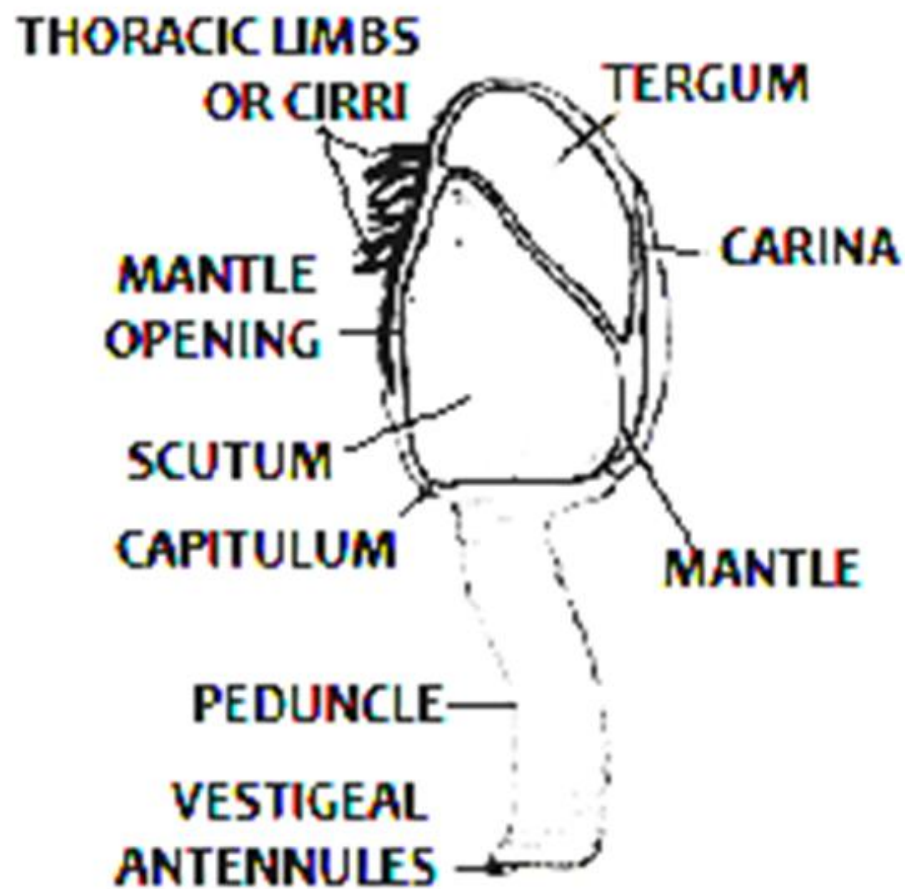
Phylum: Arthropoda
Class: Crustacea
Order: Decapoda
Type: Carcinus
(Common crab)







PHYLUM: ARTHROPODA
CLASS: CRUSTACEA
EXAMPLE: *LEPAS*

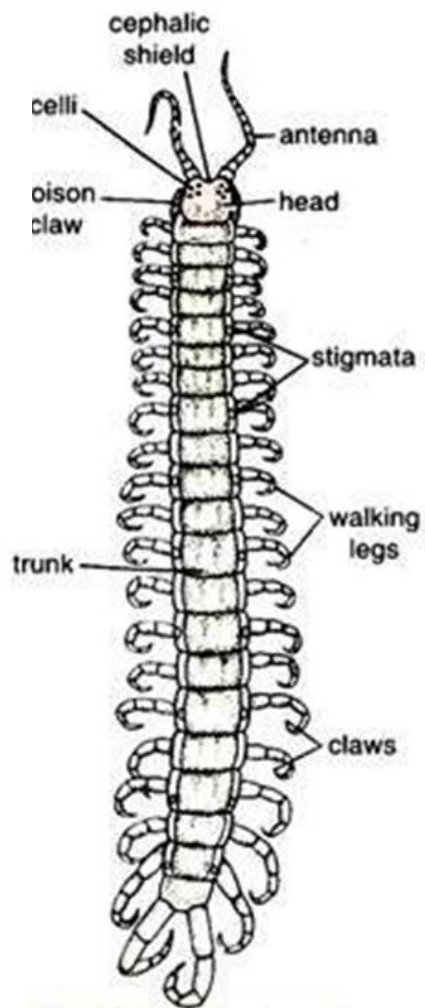


Class: Chilopoda

Order: Scolopendromorpha

Type: Scolopendra

(Centipede)



Class: Arachnida
Order: Scorpionida
Type: Palamnaeus (Scorpion)

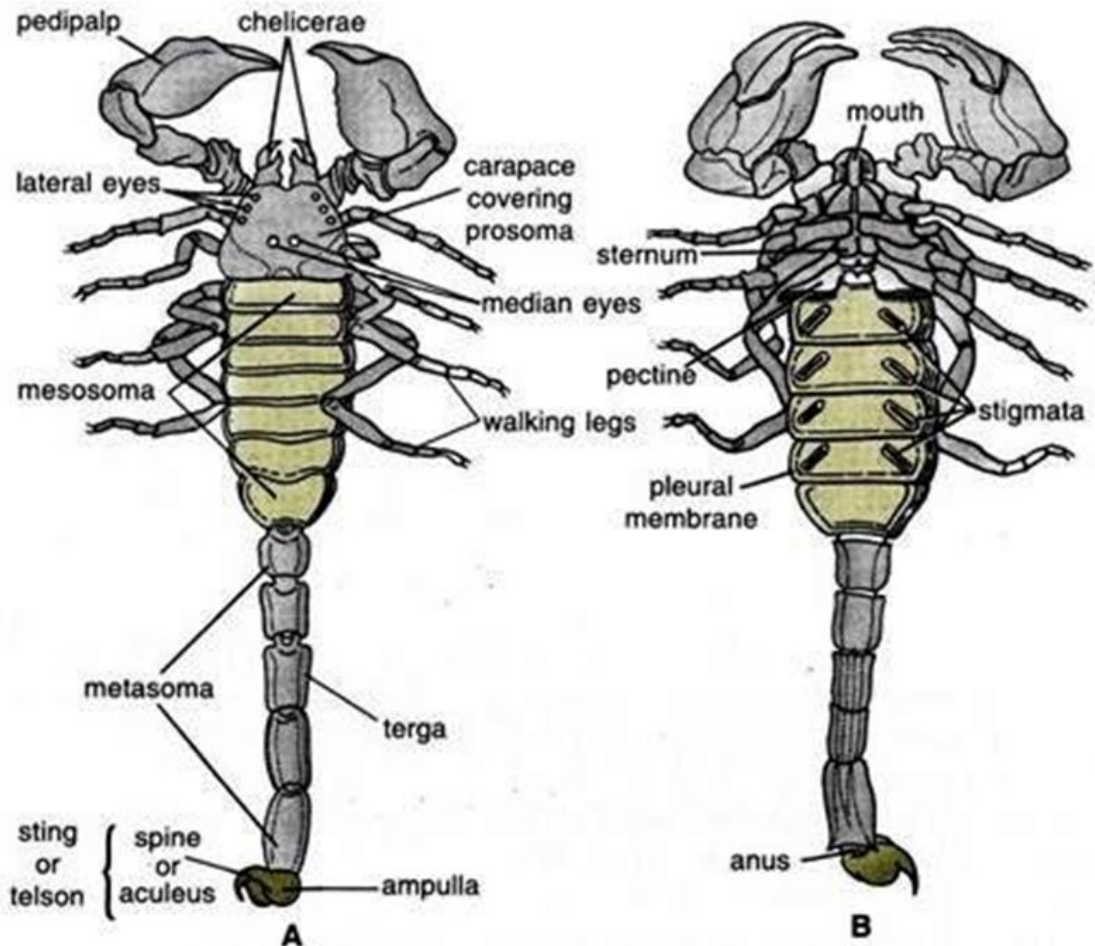


Fig. 72.1. Scorpion. A—Dorsal view; B—Ventral view.

Peripatus

Phylum : Onychophora

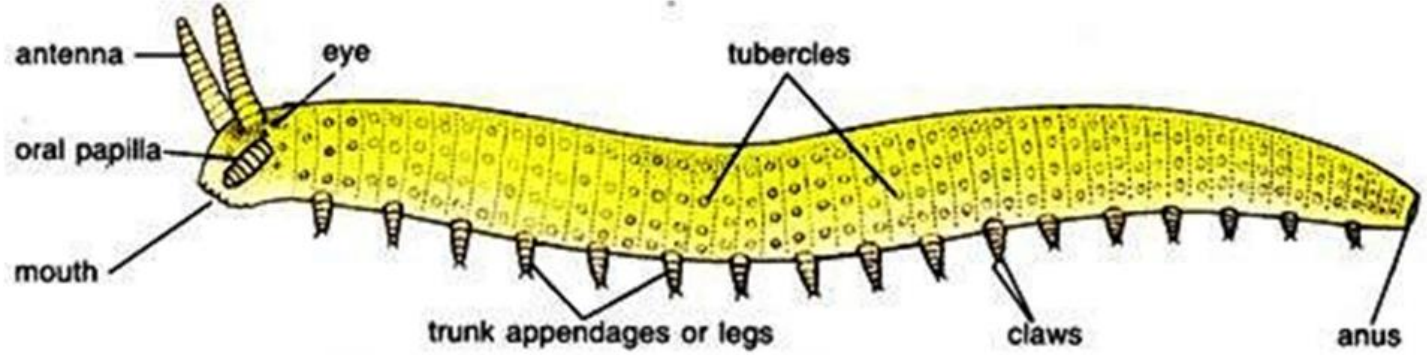
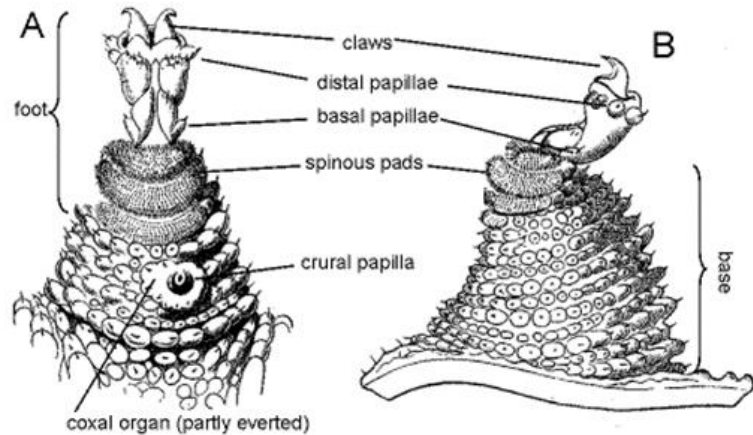
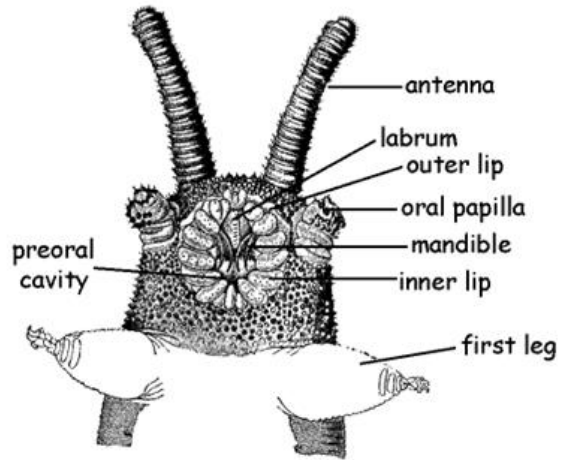


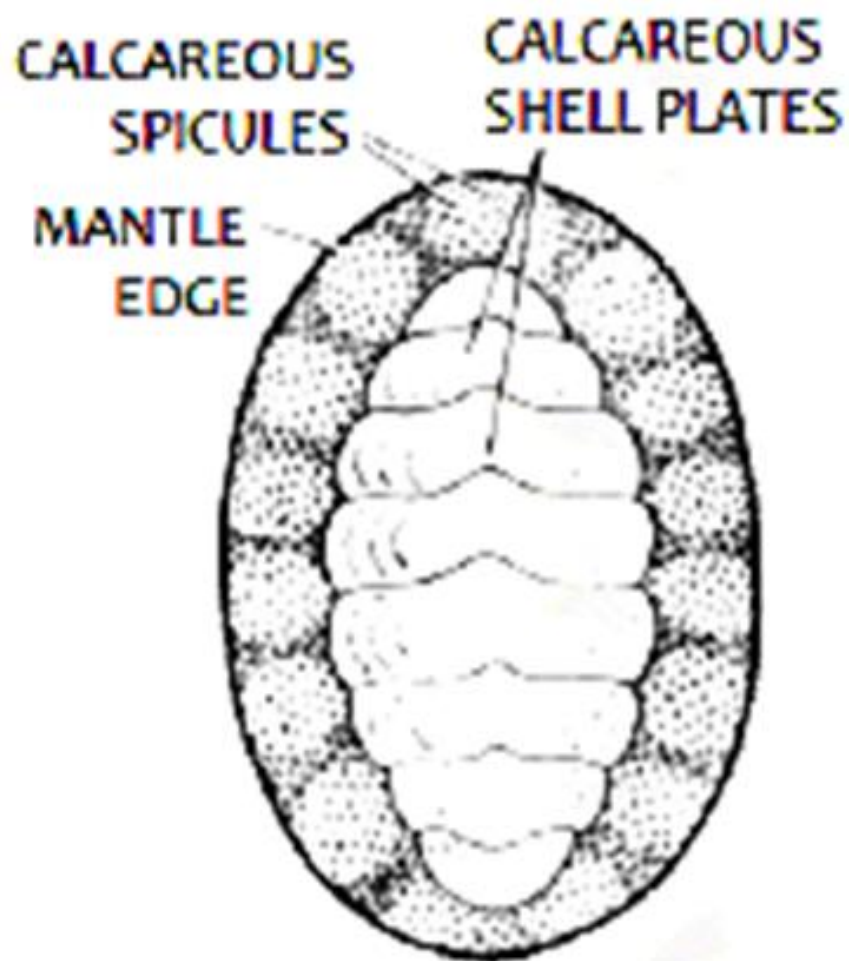
Fig. 83.1. *Peripatus*. External features in lateral view.



PHYLUM: MOLLUSCA

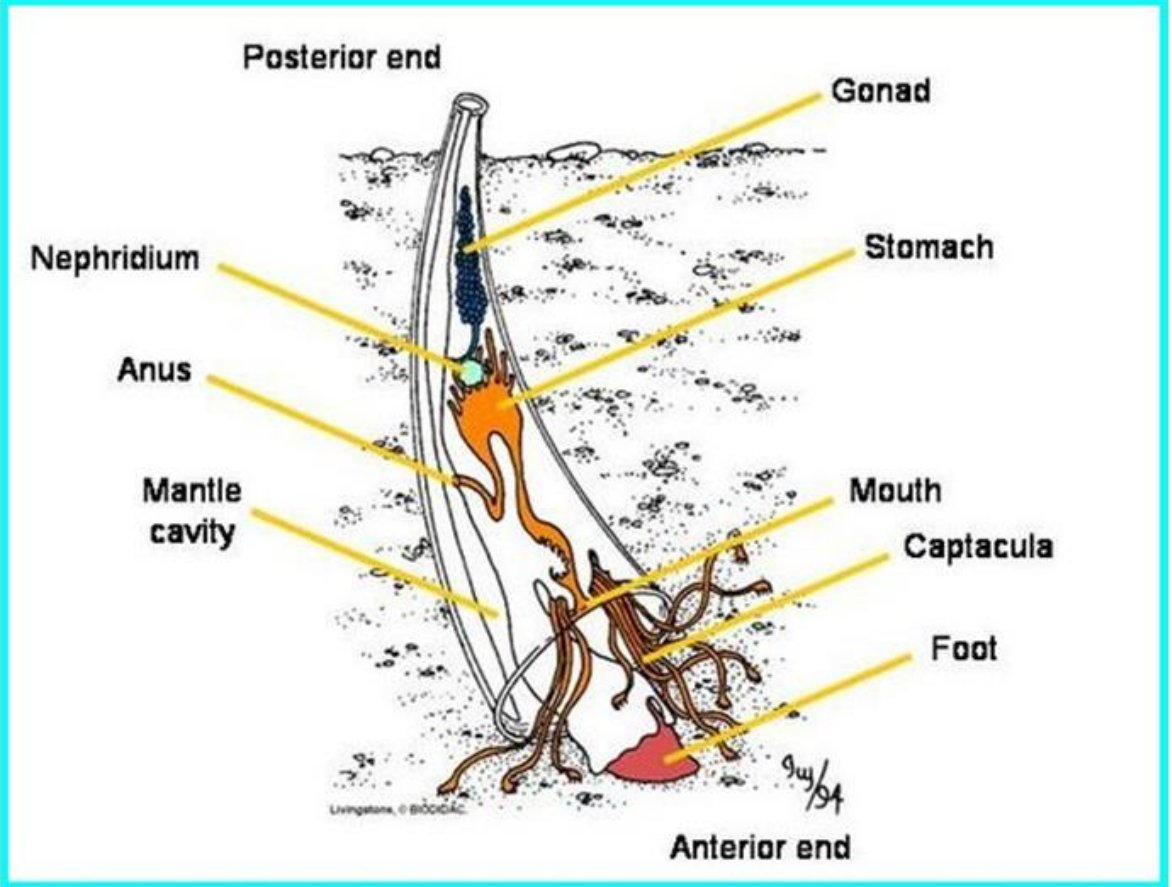
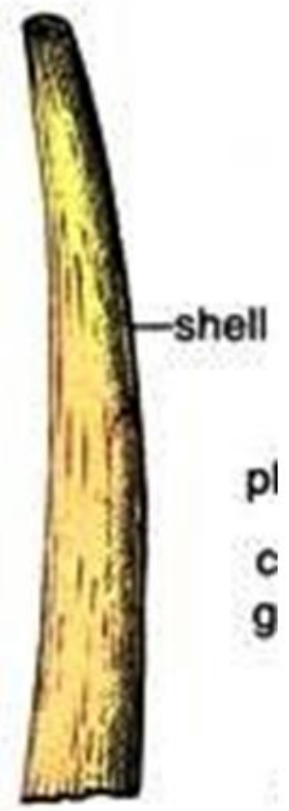
CLASS: AMPHINEURA

EXAMPLE: *CHITON*



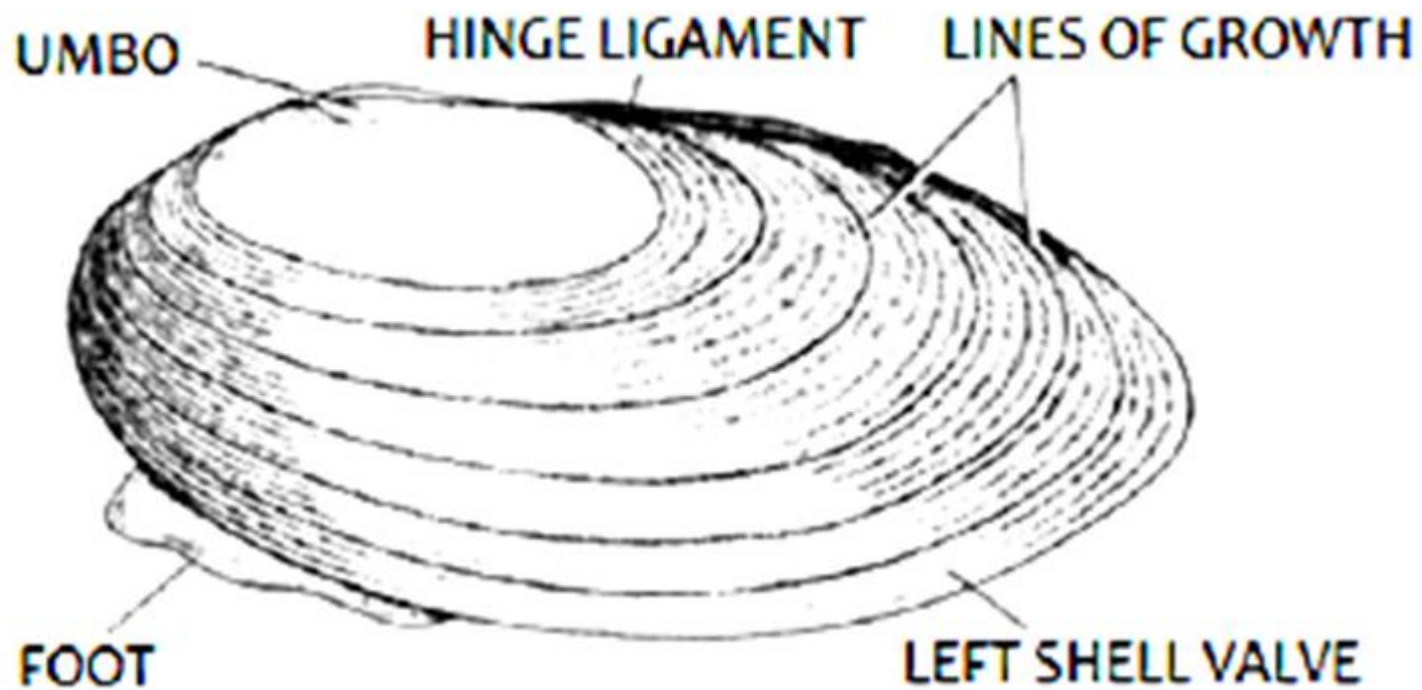
Class: Scaphopoda

Type: Dentalium (Tusk shell)



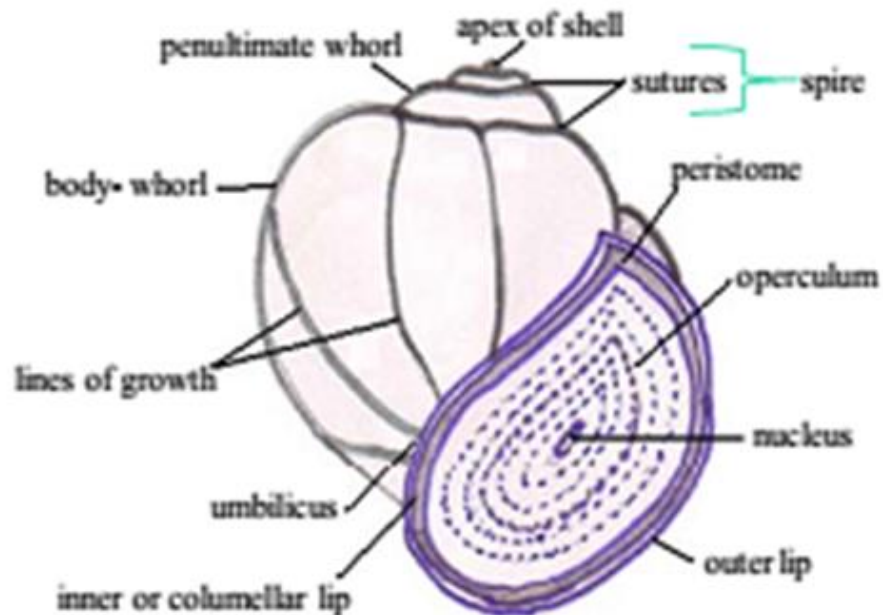
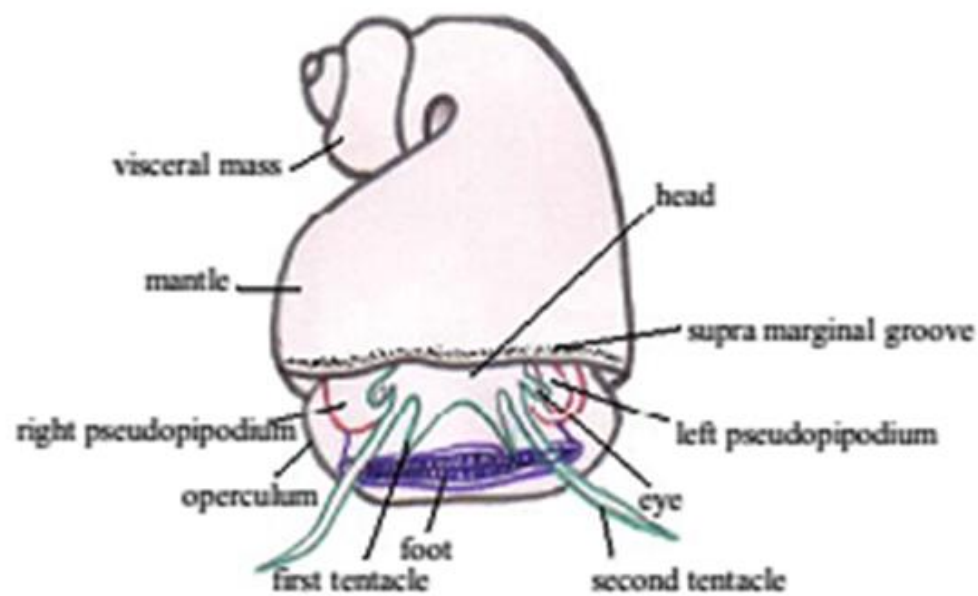
CLASS: PELECYPODA

EXAMPLE: *UNIO*



CLASS: GASTROPODA

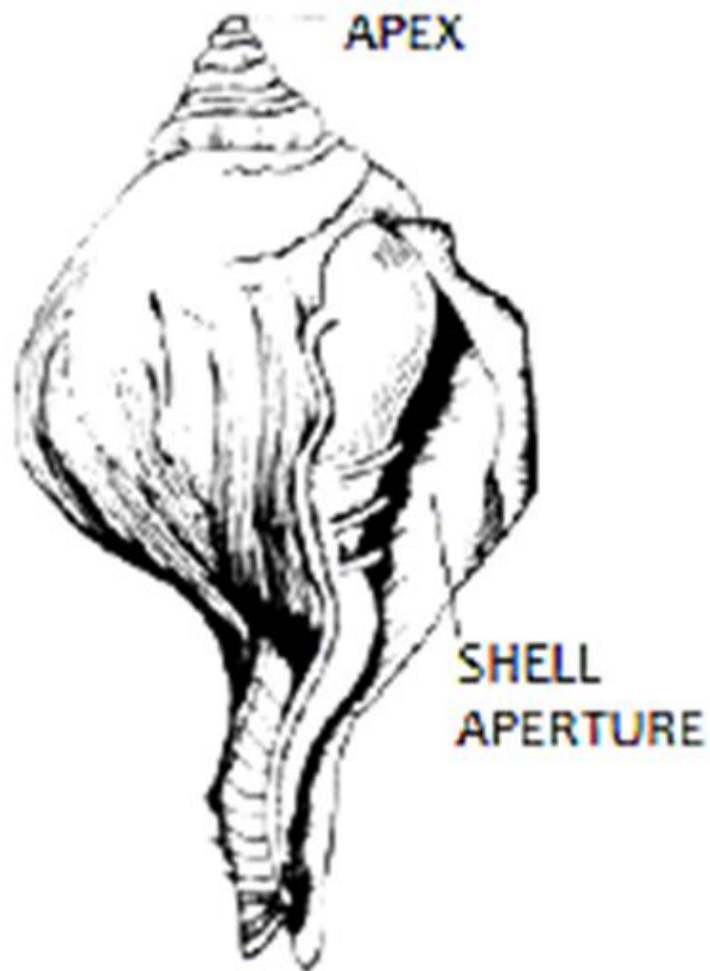
EXAMPLE: *PILA GLOBOSA*



CLASS: GASTROPODA

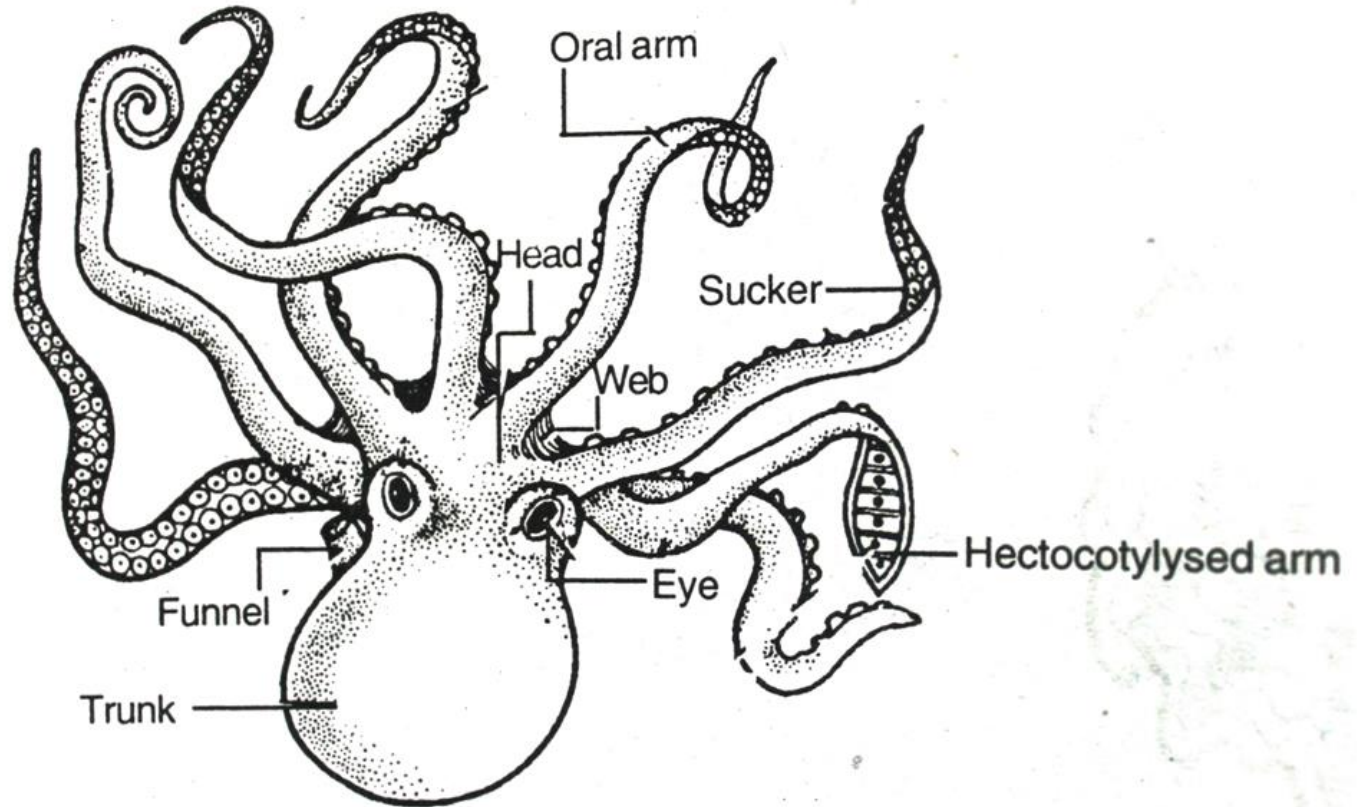
EXAMPLE: XANCUS

'sacred conch'



CLASS: CEPHALOPODA

EXAMPLE: *OCTOPUS*



CLASS: CEPHALOPODA

EXAMPLE: NAUTILUS

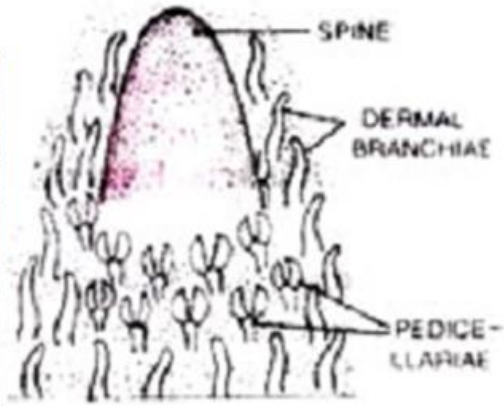
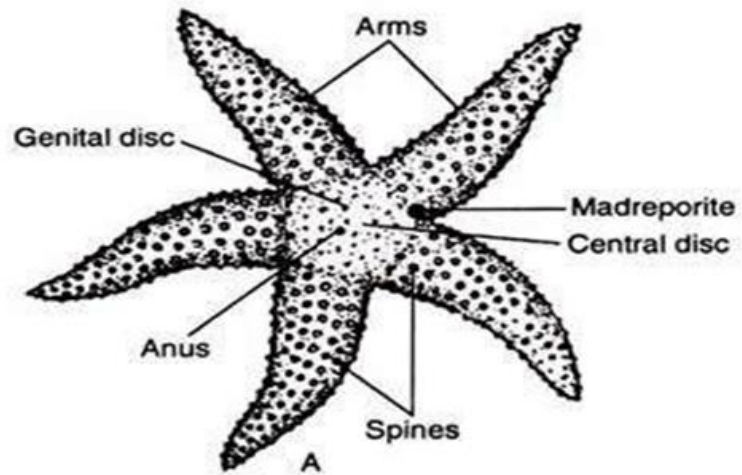
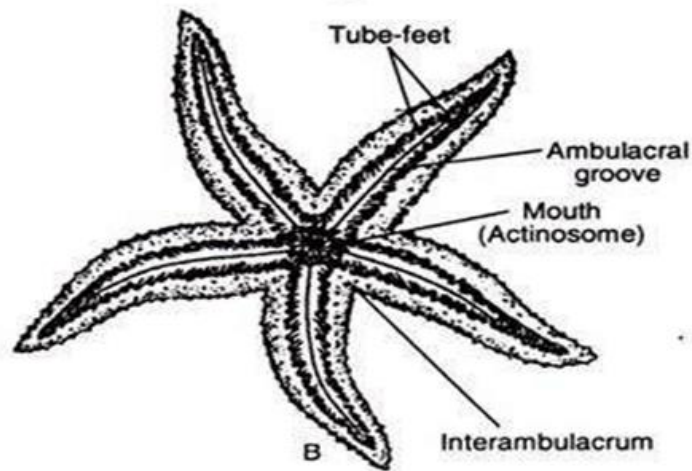
SHELL



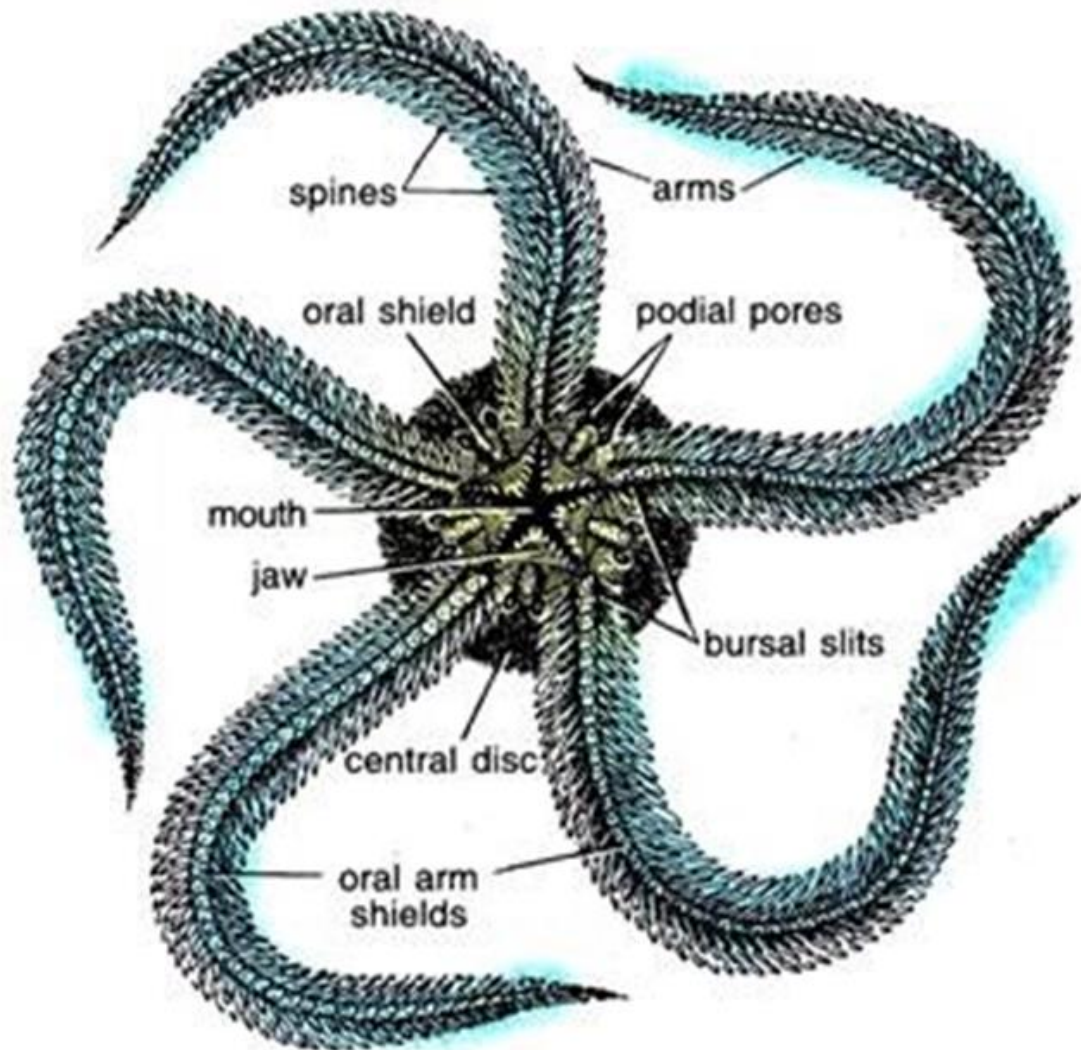
NAUTILUS

Echinodermata

Class: Asteroidea Type: Asters or Sea star

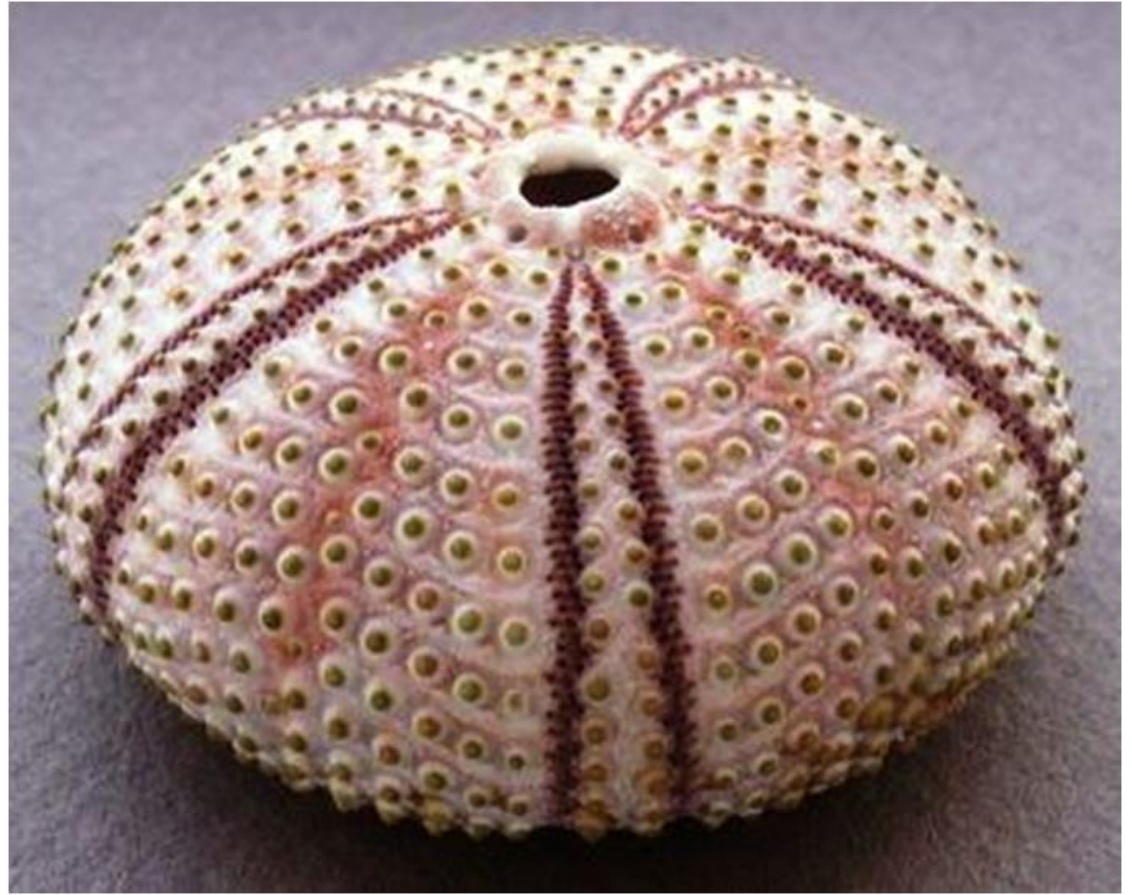


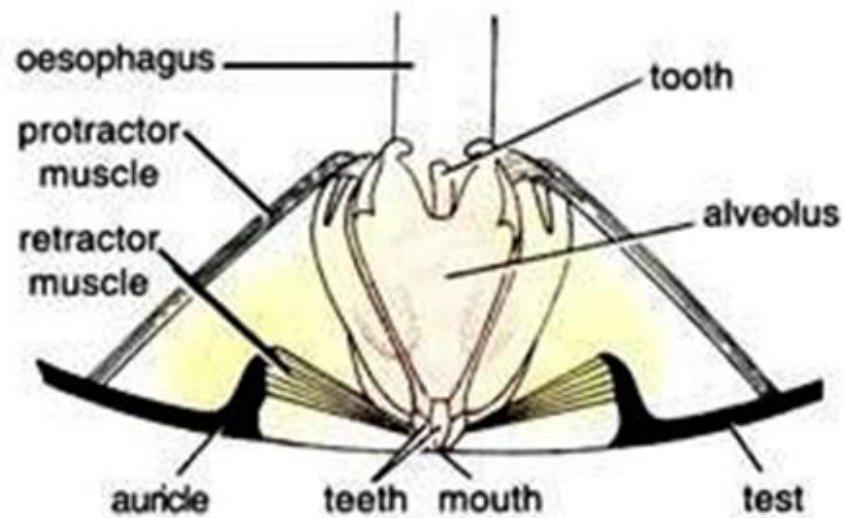
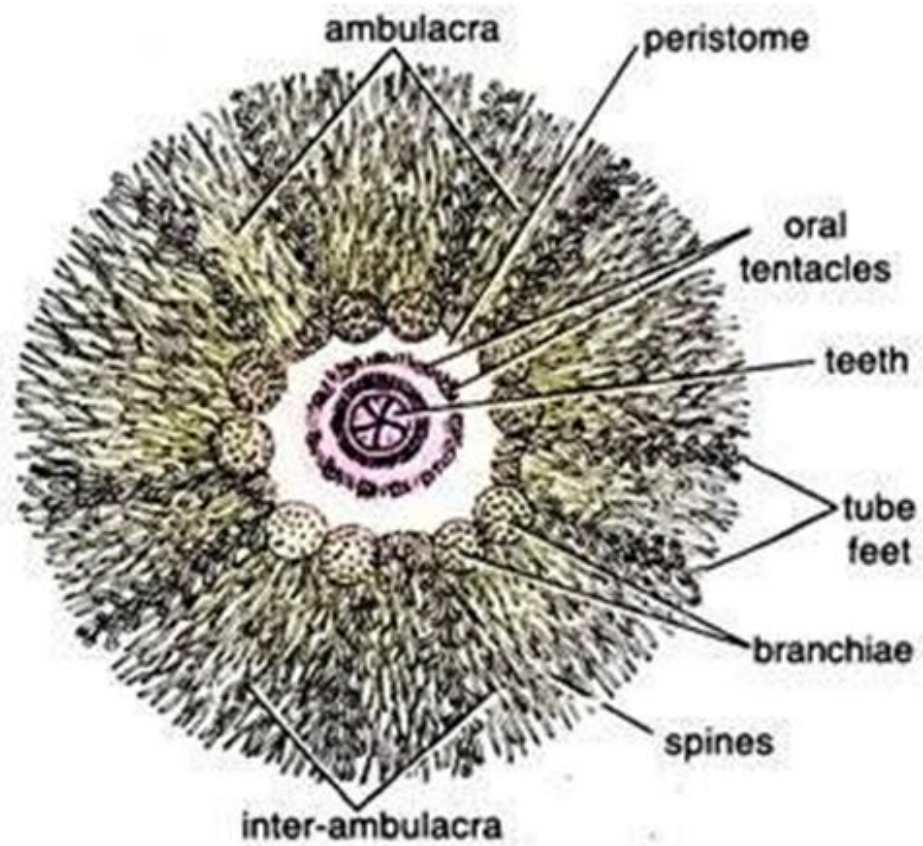
Class: Ophiuroidea
Type: Ophiothrix
(Brittle star)



Class: Echinoidea

Type: Echinus (Sea urchin)

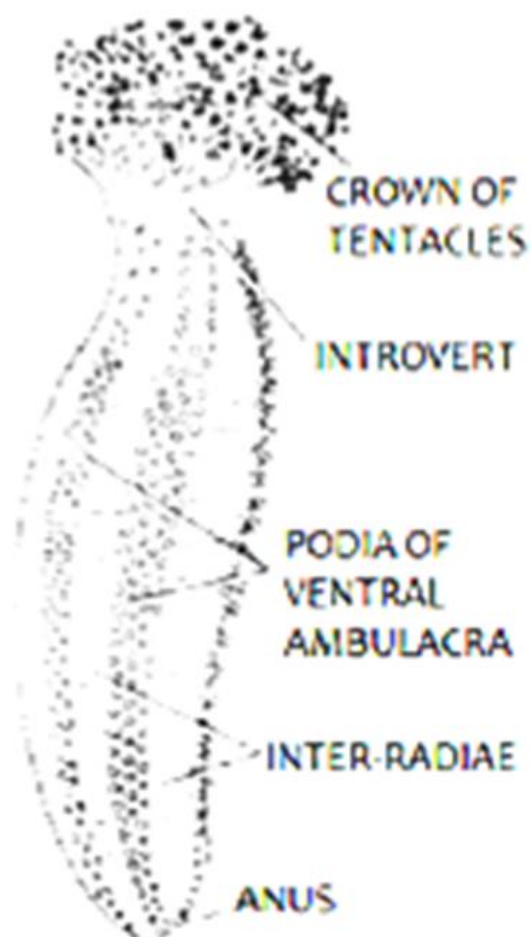




A **B**
Fig. 86.5. Echinus. A—Oral view; B—Aristotle's lantern in situ.

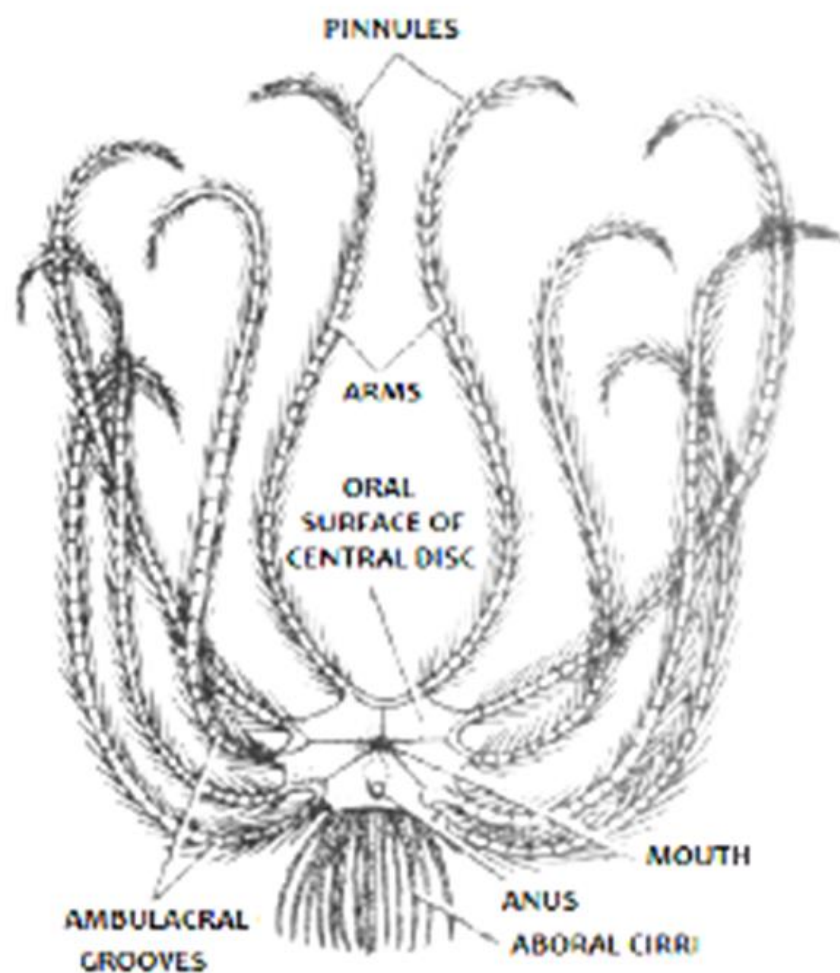
CLASS: HOLOTHUROIDEA

EXAMPLE: *CUCUMARIA*



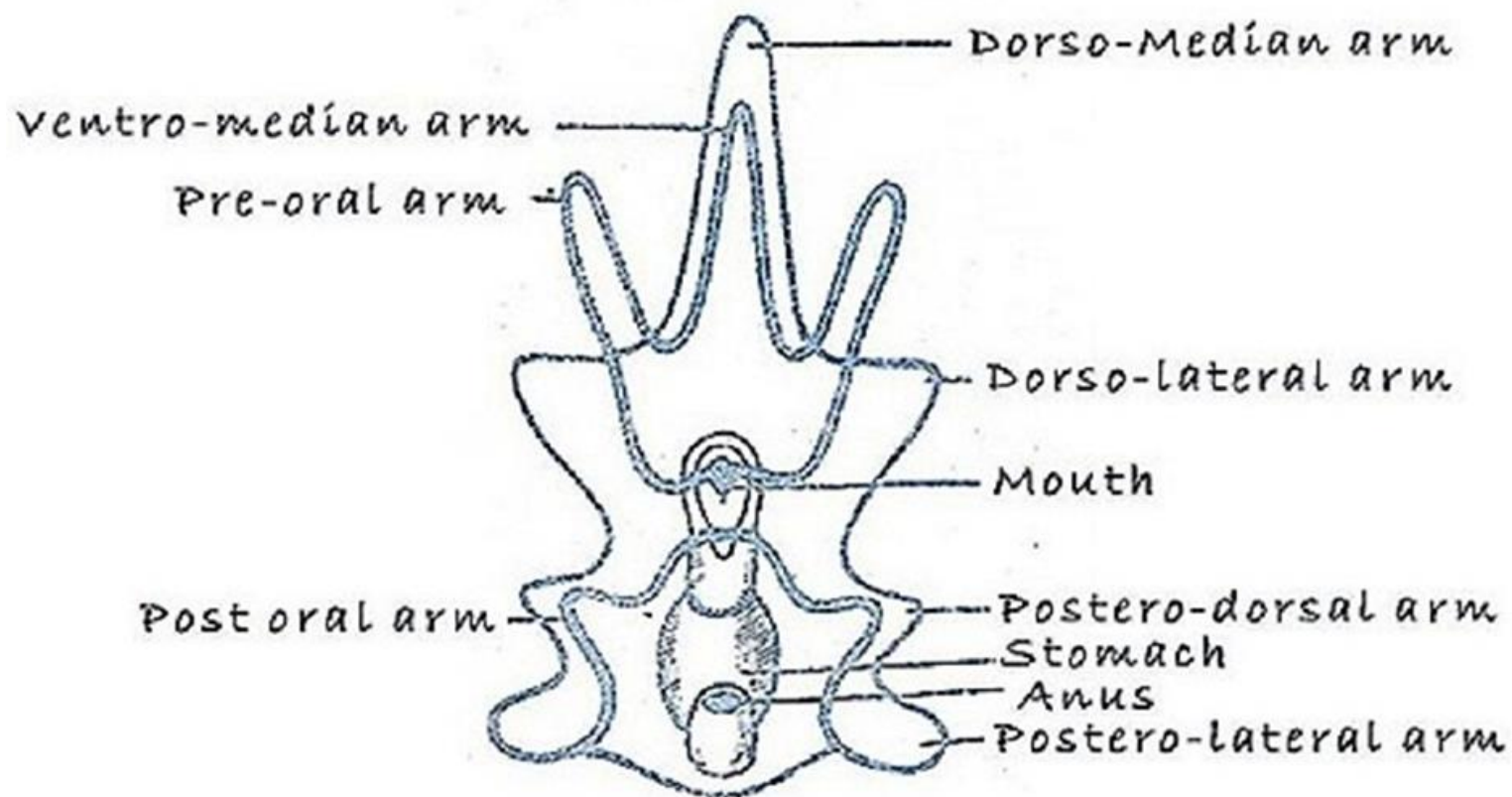
CLASS: CRINOIDEA

EXAMPLE: *ANTEDON*



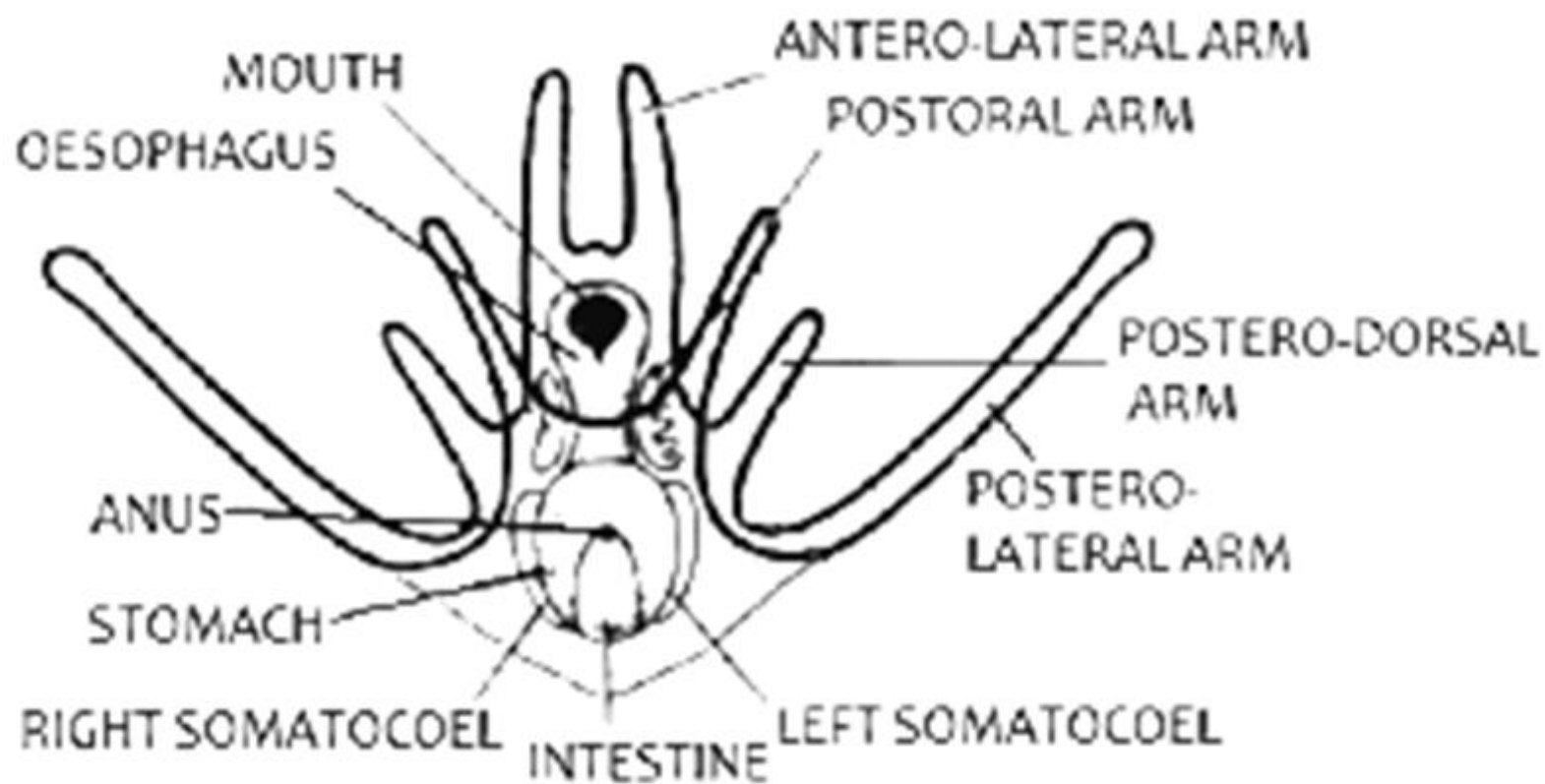
Cl: Asteroidea

Type: Bipinnaria larva (Astrias)

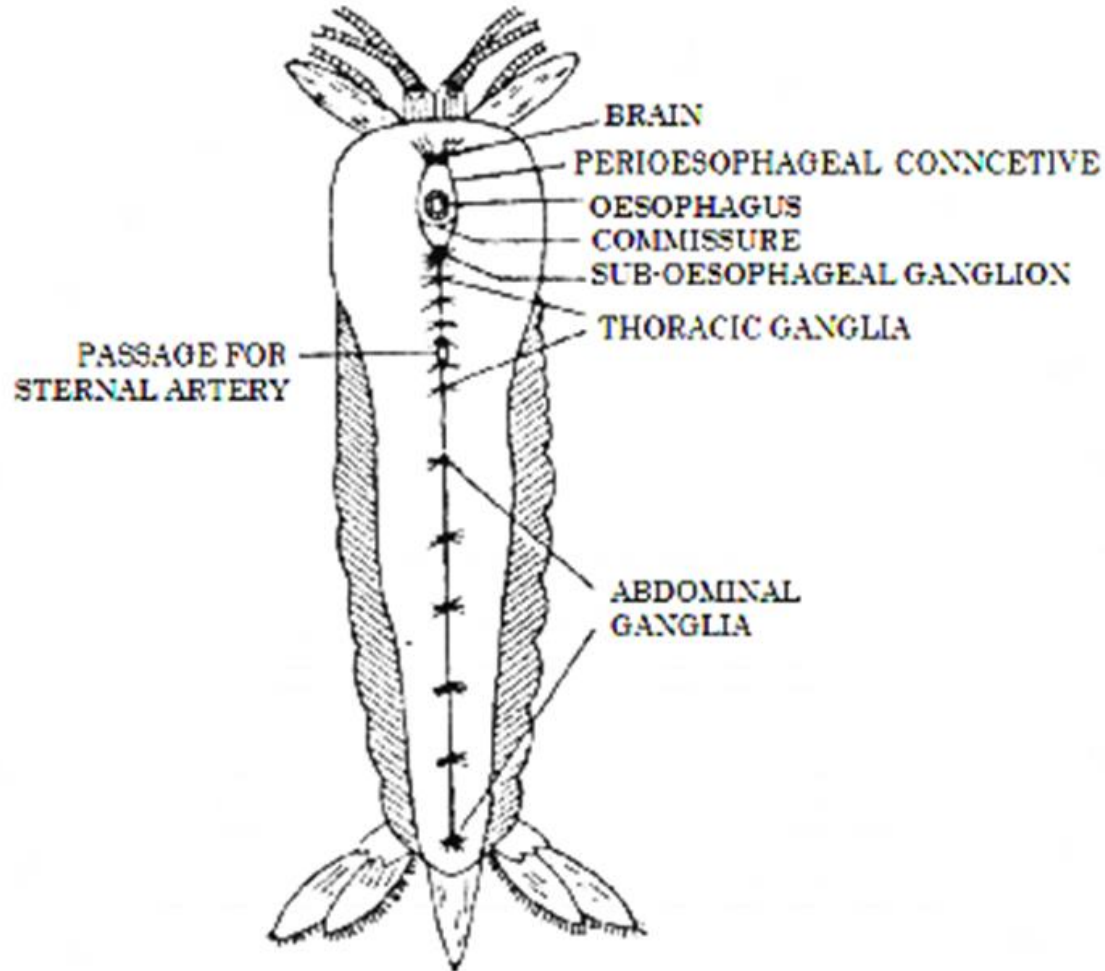


CLASS: ECHINOIDEA

EXAMPLE: PLUTEUS LARVA

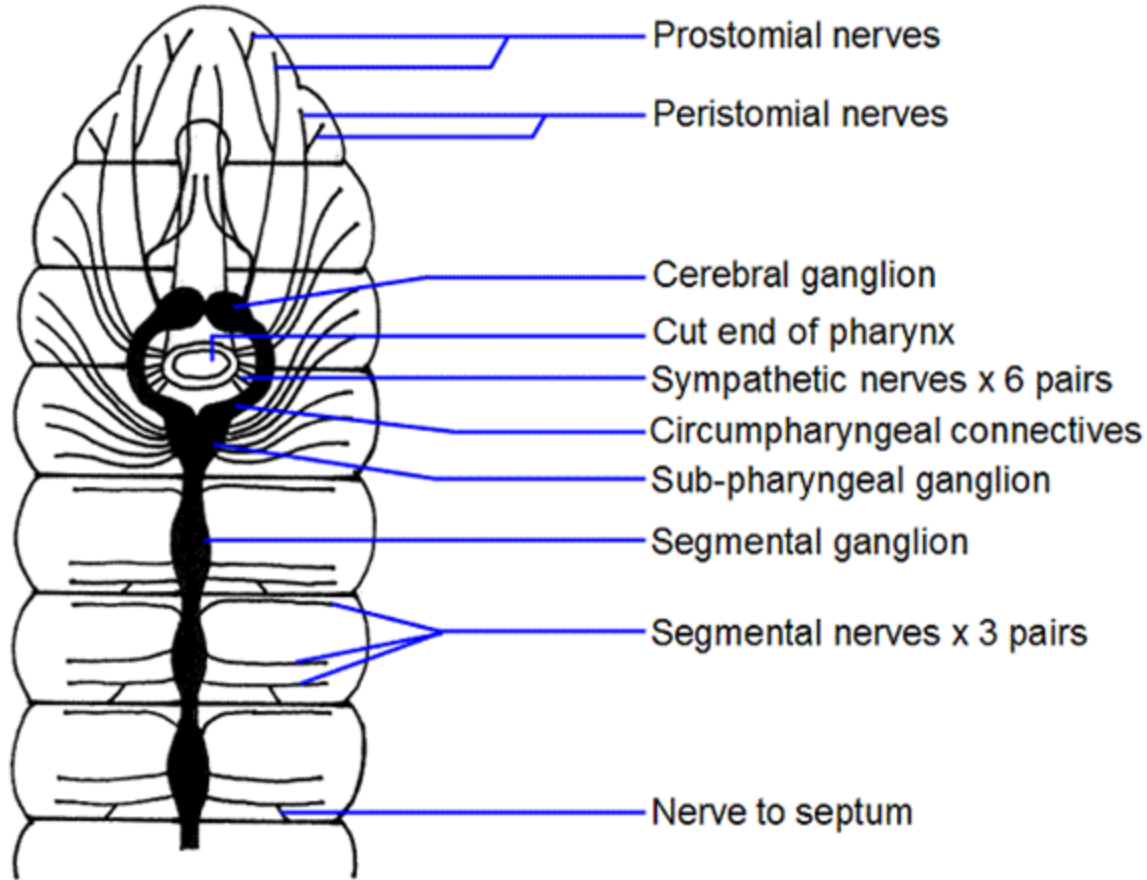


B. Dissections

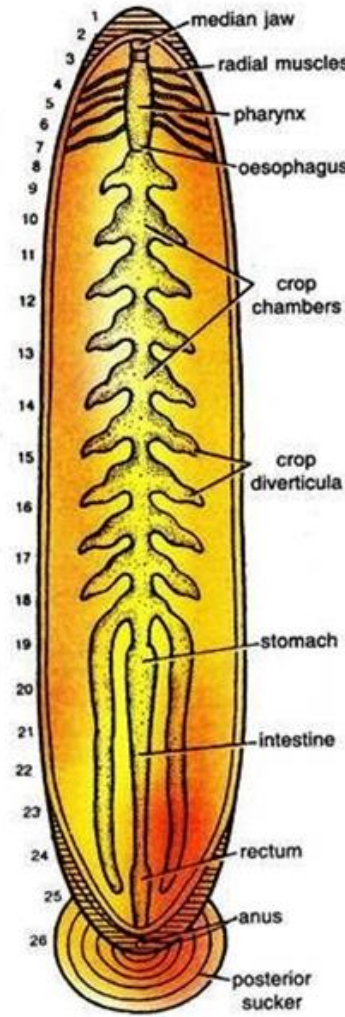


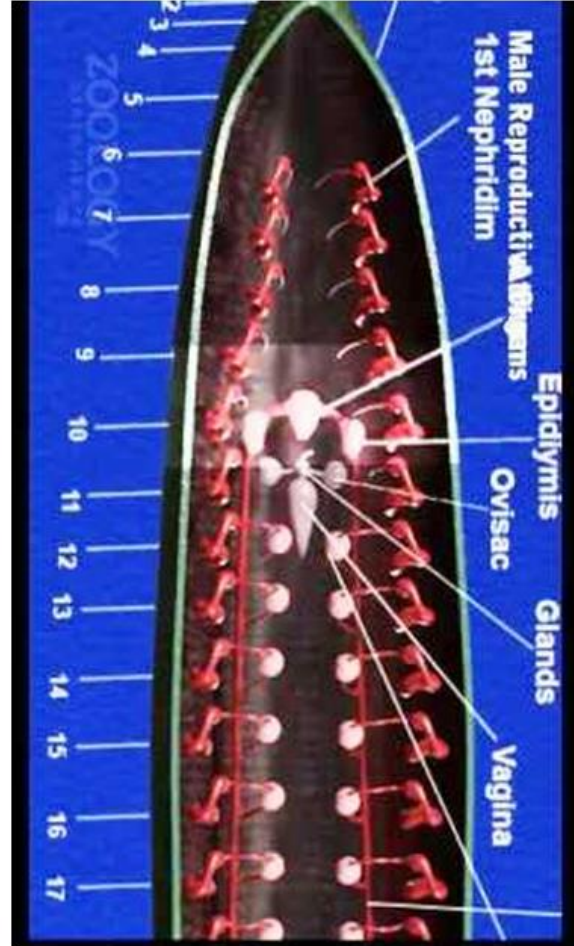
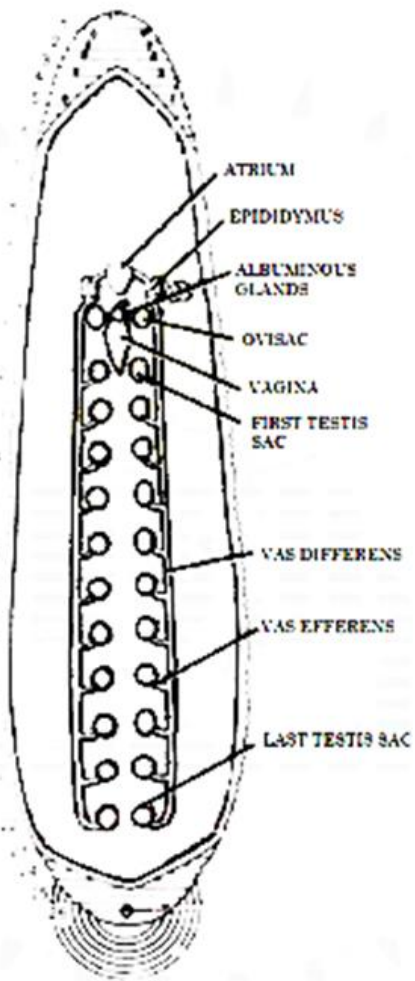
NERVOUS SYSTEM OF PRAWN

Nervous System of Earthworm



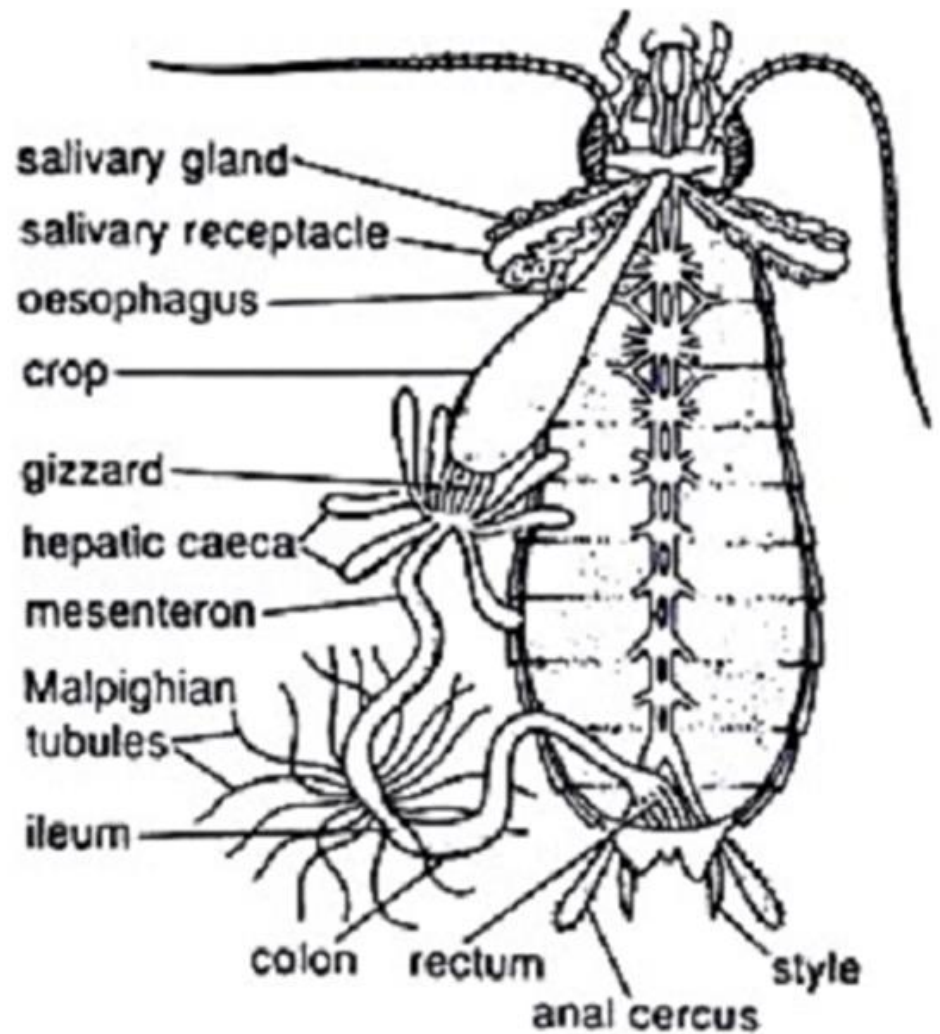
Leech Digestive system



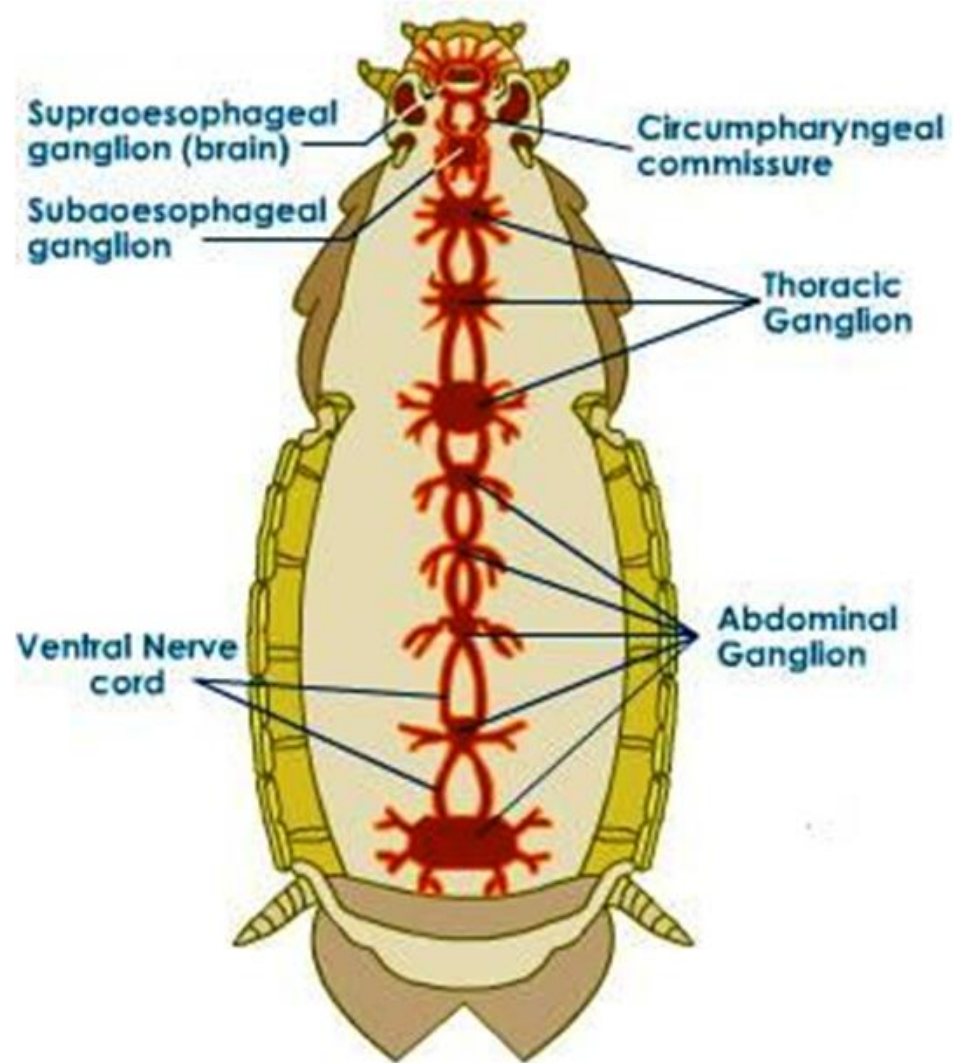


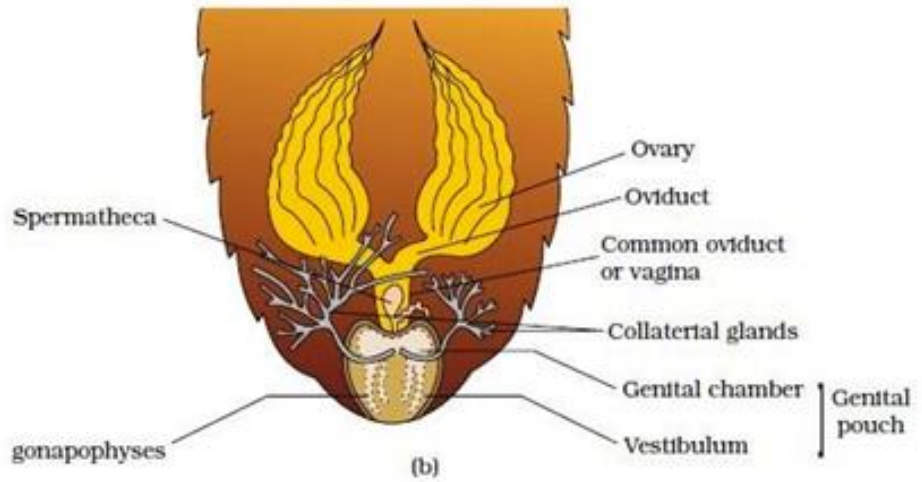
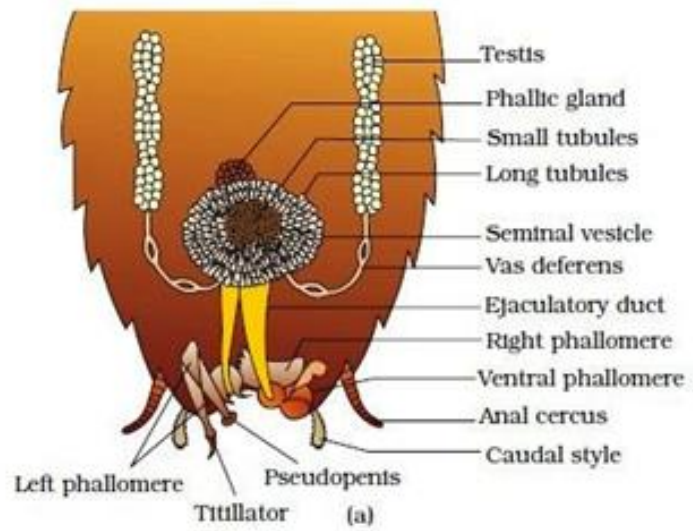
LEECH: REPRODUCTIVE SYSTEM

Cockroach Digestive system



Cockroach Nervous system

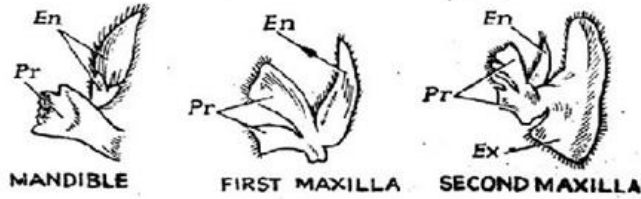
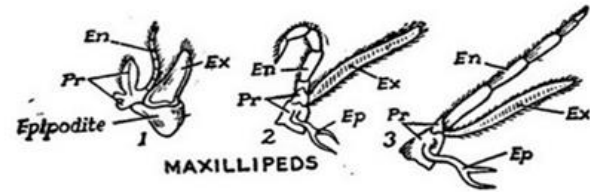
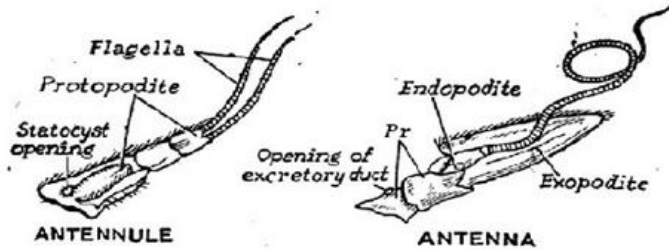




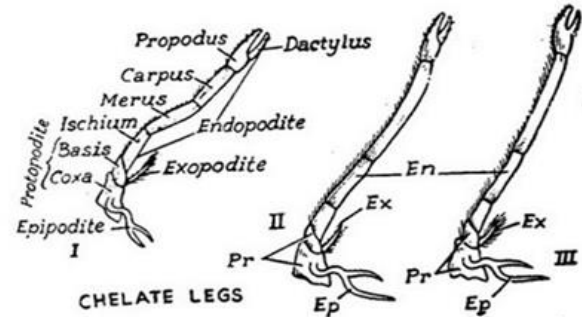
Reproductive system of cockroach : (a) male (b) female

C. Mounting and Whole mount preparation

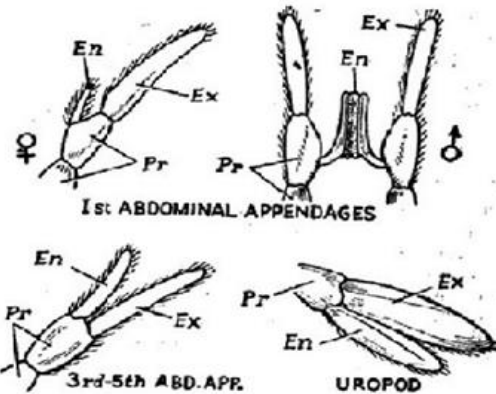
APPENDAGES OF PRAWN



PENAEUS : CEPHALIC APPENDAGES.



CHELATE LEGS

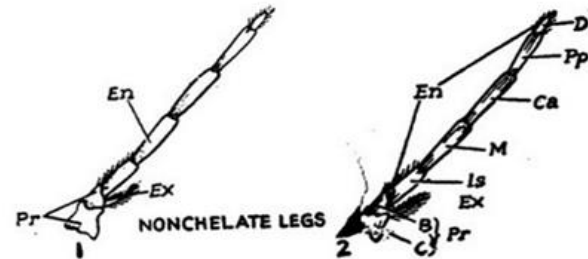


I s: ABDOMINAL APPENDAGES

3rd-5th ABD. APP.

UROPOD

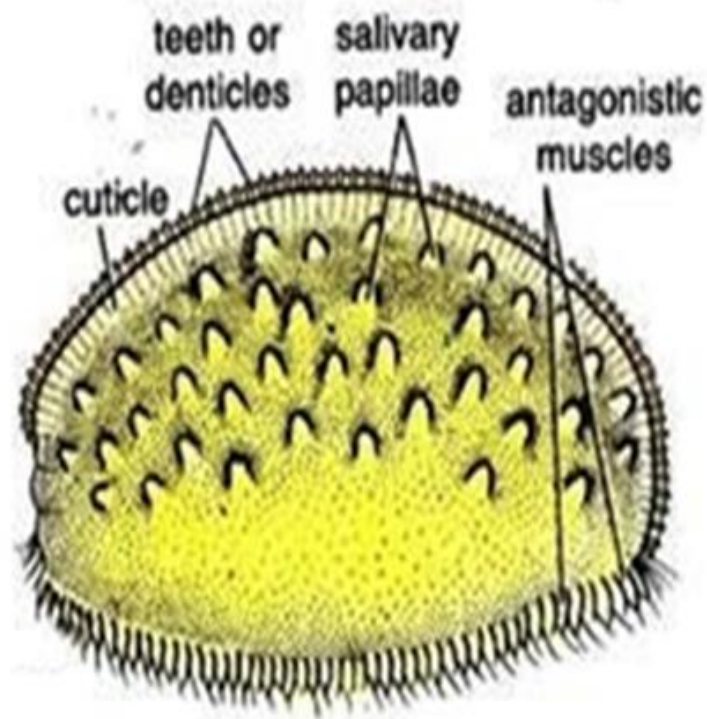
PENAEUS : ABDOMINAL APPENDAGES.



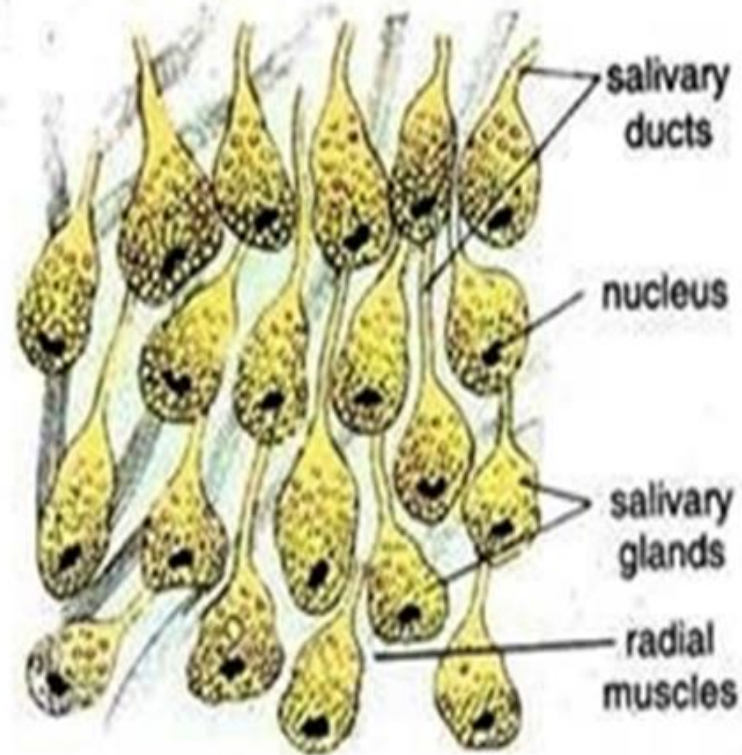
NONCHELATE LEGS

PENAEUS : THORACIC APPENDAGES.

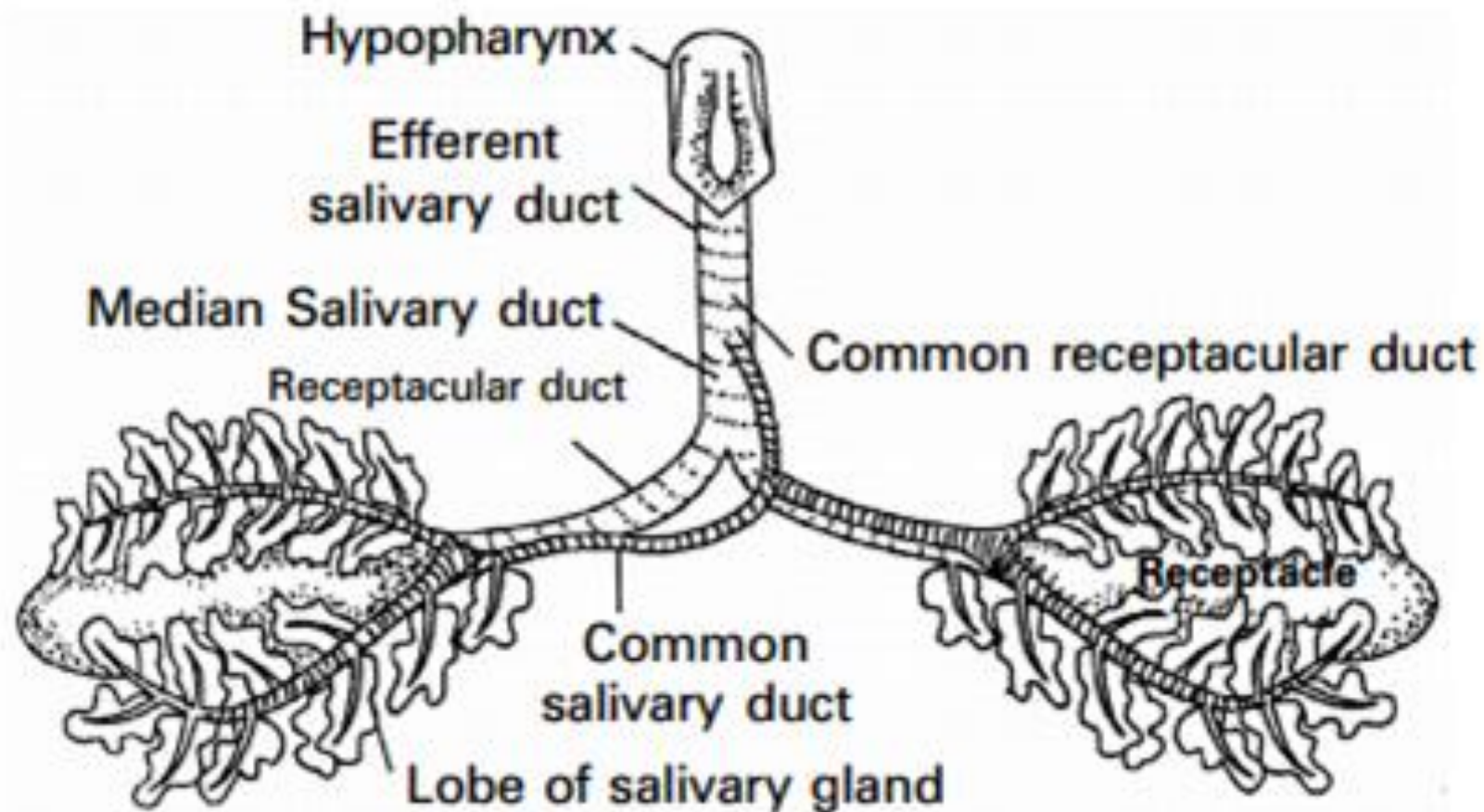
JAW AND SALIVARY CELLS OF LEECH



LEECH JAW

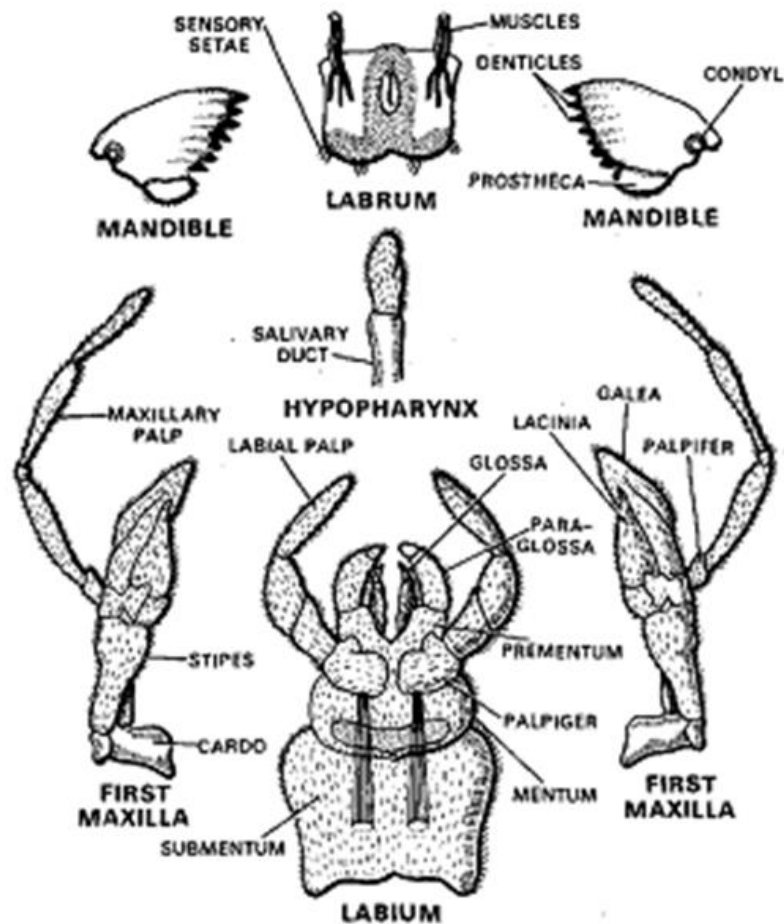


SALIVARY GLANDS

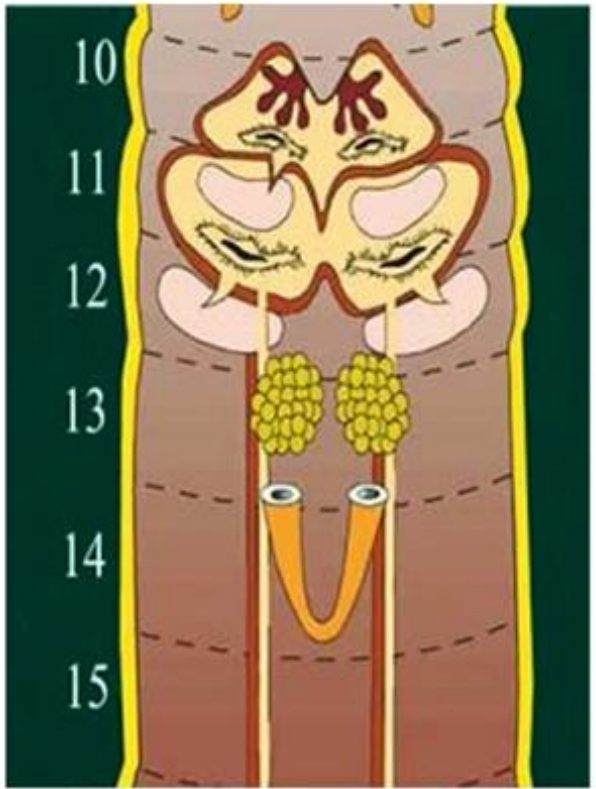
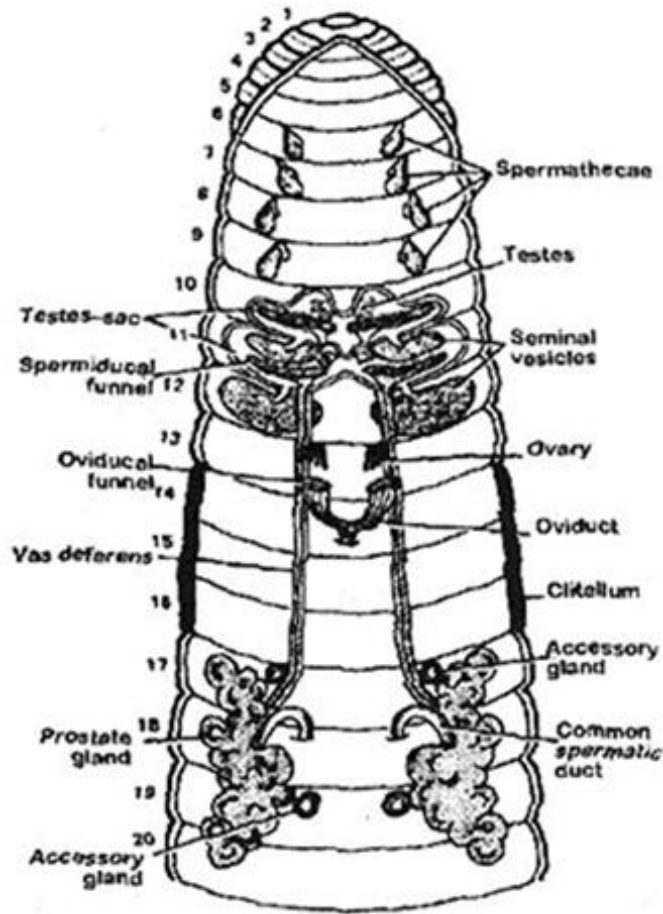


***Periplaneta* : Salivary glands**

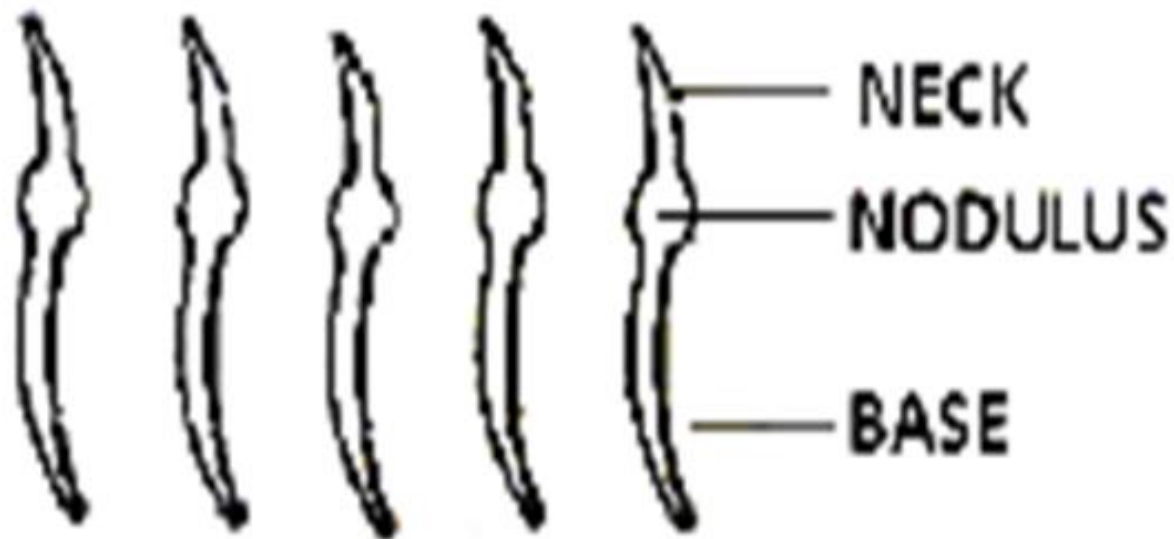
Mouth parts of Cockroach



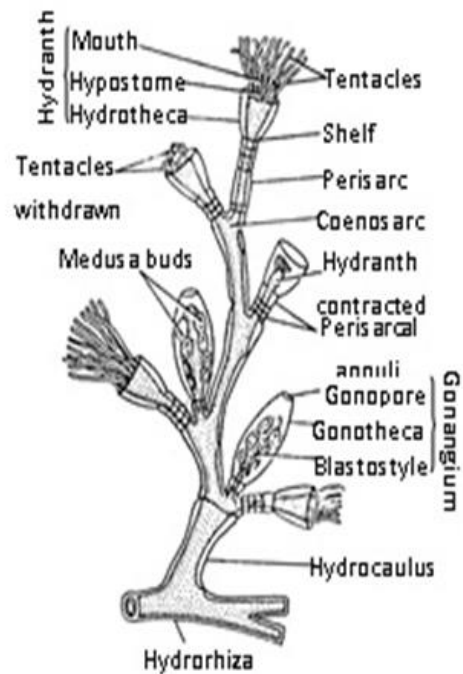
Earthworm ovary



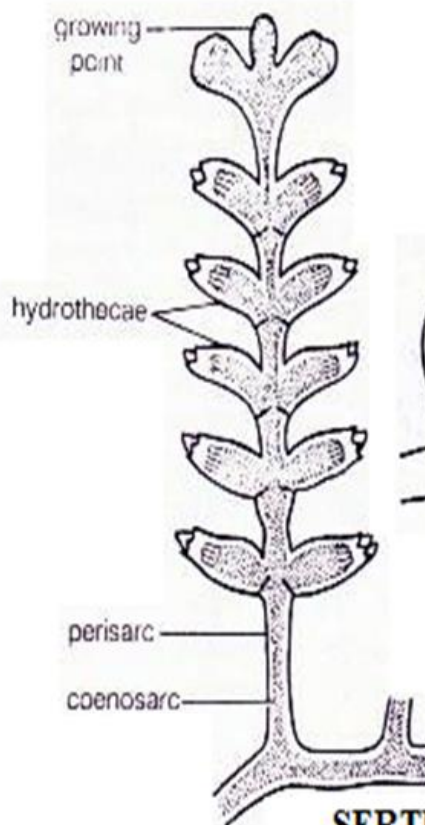
BODY SETAE OF EARTHWORM



WHOLE MOUNT PREPARATION OF COELENTERATE COLONIES



OBELIA



SERTULARIA

